

## **SECTION (3)**

### **VITAL STATISTICS**

**This section includes the data of vital statistics that include births & deaths in addition to marriage and divorce statistics.**

#### **First – Births & Deaths**

##### **1- Data Sources**

- The health offices by governorates following to Ministry of Health & Population.
- Civil registration offices in Kisms & Marakez by governorates following to Civil Registration Authority.

##### **2 – Means of data Collection :**

- According to the law , the childbirth is notified during 15 days from the occurrence date to the health office or to any health authority defined by the Minister of Health &Population resolution in the places where there are no health offices . Also , Article no. 29 from law no. 158 for the year 1980 concerning the notification of death events which must be notified within 24 hours from the death occurrence on a form prepared for this purpose.
- Starting in 2013, the Central Agency for Public Mobilization and Statistics (CAPMAS), in cooperation with the Ministry of Health Information Center, for obtaining on registered data of births and deaths with center by an electronic CD according to a cooperation agreement between each part in reviewing, checking & complete data.

##### **3 – Some Definitions :**

- Neonatal Birth Deaths (Less than one month): mean the children who died at the age less than 28 days.
- Infant Deaths: mean the children who died at the age less than one year.
- Child mortality: means the children who died at the age less than five years.
- The Natural Increase rate: Births increase or (decrease) rather than population deaths in a certain region during a specific period of time.
- The number of Natural increase rate: equals the difference between both births and deaths number in the same period of time.
- Crude Births Rate : The number of living births whom are born during the year per one thousand of the population in the mid-year
- Crude Deaths Rate: The number of deaths during the year per one thousand of the population in the mid-year.
- Maternal Deaths Rate: The number of female deaths who died during the year due to pregnancy, delivery &Puerperium per one hundred thousand from the total living births.
- Gender Percentage at Births: Number of males per one hundred female's births.
- Total Fertility Rate: Average of children number who may born living birth per a lady or ( a group of ladies ) through the pregnancy age ( 15 – 49 ) .

#### **Second – Marriage and Divorce:**

##### **1- Data Sources:**

###### **A- Family Affairs Courts:**

The number of family affairs is 231 status courts. CAPMAS is receiving the data of marriage & divorce cases of couples in the case of non Muslims with the same religion and mellah. According to Muslims data issued by marriage officials El Maazoon (the man who registers marriages & divorces case) but in the case of other religions is assigned by documentaries.

###### **B- Real Estate Registration and Documentation Authority:**

CAPMAS is receiving monthly data of marriage and divorce cases of Egyptian couples with different religion or mellah or Nationality, its according to documentations offices at Cairo and Alexandria Governorates. It is the sources of data concerning marriage status between Egyptians and Foreigners or in the case when the bride's religion differs from that of bridegroom.

###### **C- Primary Courts :**

Data of final legal events of divorce are given from the primary courts which are 26 courts at the state.

##### **2- Some Definitions:**

- **Crude Marriage Rate:** Number of marriage cases during the year per one thousand of the population.
- **Crude Divorce Rate:** Number of divorce cases during the year per one thousand of the population.

3 - 1 المواليد والوفيات والزيادة الطبيعية إجمالى الجمهورية ( 1987 - 2018\* )

## 3 - 1 BIRTHS, DEATHS &amp; NATURAL INCREASE TOTAL EGYPT ( 1987 - 2018\* )

Unit: (000)

الوحدة : بالآلاف

Natural Increase الزيادة الطبيعية		Deaths الوفيات		Births المواليد		Years السنوات
Rate <sup>(1)</sup> معدل <sup>(1)</sup>	NO. العدد	Rate <sup>(1)</sup> معدل <sup>(1)</sup>	NO. العدد	Rate <sup>(1)</sup> معدل <sup>(1)</sup>	NO. العدد	
29.3	1 437	9.5	466	38.8	1 903	1987
29.4	1 486	8.4	427	37.8	1 913	1988
25.2	1 309	8.0	414	33.2	1 723	1989
24.3	1 294	7.4	393	31.7	1 687	1990
22.8	1 245	7.2	392	30.0	1 637	1991
20.0	1 115	6.9	382	26.9	1 497	1992
21.4	1 221	6.7	380	28.1	1 601	1993
21.1	1 225	6.6	385	27.7	1 611	1994
21.2	1 220	6.7	385	27.9	1 605	<sup>(2)</sup> 1995
21.8	1 282	6.5	380	28.3	1 662	1996
21.0	1 265	6.5	389	27.5	1 655	1997
21.0	1 287	6.5	400	27.5	1 687	1998
20.6	1 292	6.4	401	27.0	1 693	1999
21.1	1 347	6.3	405	27.4	1 752	2000
20.5	1 336	6.2	405	26.7	1 741	2001
20.1	1 343	6.4	424	26.5	1 767	2002
19.7	1 337	6.5	440	26.2	1 777	2003
19.3	1 339	6.4	441	25.7	1 780	2004
19.1	1 350	6.4	451	25.5	1 801	2005
19.4	1 402	6.3	452	25.7	1 854	2006
20.4	1 499	6.1	451	26.5	1 950	2007
21.2	1 589	6.1	462	27.3	2 051	2008
22.6	1 741	6.2	477	28.8	2 217	2009
22.6	1 778	6.1	483	28.7	2 261	2010
24.2	1 949	6.1	493	30.3	2 442	2011
25.5	2 101	6.4	529	31.9	2 630	2012
25.0	2 110	6.0	511	31.0	2 621	2013
25.2	2 188	6.1	531	31.3	2 720	2014
23.7	2 111	6.5	574	30.2	2 685	2015
22.5	2044	6.1	556	28.6	2 600	2016
21.1	2010	5.7	547	26.8	2 557	2017
18.8	1822	5.8	560	24.5	2 382	2018

(1) Rate per thousand of pop.

(2) Data from 1995 includes births &amp; deaths inside Egypt only

(\*) Preliminary Data

(1) المعدل لكل الف نسمة

(2) البيانات اعتبارا من 1995 تشمل المواليد والوفيات داخل مصر فقط

(\*) بيانات أولية

3 - 2 المواليد والوفيات والزيادة الطبيعية طبقاً لمحافظة الجمهورية 2018\*

## 3 - 2 BIRTHS, DEATHS &amp; NATURAL INCREASE, BY GOVERNORATE 2018\*

Unit: No.

الوحدة : بالعدد

Governorates	الزيادة الطبيعية Natural Increase		الوفيات Deaths		المواليد Births		المحافظات
	المعدل (1) Rate (1)	العدد No.	المعدل (1) Rate (1)	العدد No.	المعدل (1) Rate (1)	العدد No.	
<b>Total</b>	<b>18.8</b>	<b>1 822 054</b>	<b>5.8</b>	<b>560 308</b>	<b>24.5</b>	<b>2 382 362</b>	<b>الإجمالي</b>
Cairo	13.6	132 326	9.2	88 938	22.8	221 264	القاهرة
Alexandria	14.0	73 744	7.8	41 051	21.8	114 795	الاسكندرية
Port-Said	10.7	8 144	6.2	4 683	16.9	12 827	بورسعيد
Suez	16.0	11 857	5.1	3 780	21.0	15 637	السويس
Damietta	15.2	23 229	6.1	9 334	21.3	32 563	دمياط
Dakahlia	15.5	102 785	5.9	38 788	21.4	141 573	الدقهلية
Sharkia	18.0	131 627	5.1	37 393	23.1	169 020	الشرقية
Kalyoubia	15.6	89 467	4.9	28 152	20.5	117 619	القليوبية
Kafr-El-Sheikh	18.9	65 081	5.0	17306	23.9	82 387	كفر الشيخ
Gharbia	15.7	80 309	6.0	30 465	21.7	110 774	الغربية
Menoufia	17.6	77 349	5.5	24 330	23.1	101 679	المنوفية
Behera	20.1	127 252	4.9	30 773	24.9	158 025	البحيرة
Ismailia	20.4	27 279	5.9	7 907	26.3	35 186	الاسماعيلية
Giza	17.7	156 326	5.4	47 282	23.1	203 608	الجيزة
Beni-Suef	23.1	74 937	4.8	15 586	27.9	90 523	بني سويف
Fayoum	22.0	81 431	3.9	14 482	25.9	95 913	الفيوم
Menia	24.3	137 908	4.7	26 741	29.0	164 649	المنيا
Asyout	25.3	114 648	5.9	26 914	31.3	141 562	أسيوط
Suhag	25.1	128 665	5.0	25 488	30.1	154 153	سوهاج
Qena	24.0	78 321	5.3	17 332	29.3	95 653	قنا
Aswan	20.9	31 672	5.5	8 279	26.4	39 951	أسوان
Luxor	20.3	26 059	5.7	7 280	26.0	33 339	الأقصر
Red Sea	19.4	7 143	4.9	1 810	24.3	8 953	البحر الأحمر
ElWadi ElGidid	16.3	4 026	4.6	1 135	20.9	5 161	الوادي الجديد
Matrouh	45.9	20 697	5.9	2 642	51.8	23 339	مطروح
North Sinai	16.2	7 436	3.8	1 750	20.0	9 186	شمال سيناء
South Sinai	22.3	2 336	6.6	687	28.8	3 023	جنوب سيناء

(1) Rate Per thousand of Population

(1) المعدل لكل الف نسمة

(\*) Preliminary Data

(\*) بيانات أولية

3 - 3 معدل وفيات الرضع والأطفال بحضر وريف الجمهورية طبقاً للنوع (1992-2018\*)  
**3 - 3 INFANT AND CHILD MORTALITY RATES IN URBAN AND RURAL  
 AREAS BY SEX (1992 - 2018\*)**

معدل وفيات الأطفال <sup>(2)</sup> Children mortality rate <sup>(2)</sup>				معدل وفيات الرضع <sup>(1)</sup> Infant mortality rate <sup>(1)</sup>				السنوات Years
إناث Females	ذكور Males	ريف Rural	حضر Urban	إناث Females	ذكور Males	ريف Rural	حضر Urban	
57.9	52.0	60.7	45.4	37.5	35.3	38.1	33.5	1992
48.6	43.1	51.3	37.7	33.4	30.4	34.0	28.8	1993
43.5	42.8	48.6	35.7	30.8	30.9	33.2	27.6	1994
42.5	40.5	54.8	23.7	30.2	29.4	37.9	18.9	1995
39.6	38.3	43.2	33.5	29.0	28.4	30.5	26.3	1996
40.6	39.4	44.9	33.7	30.5	30.0	33.0	26.6	1997
40.2	38.0	42.8	33.6	29.7	28.6	31.0	26.4	1998
36.9	38.3	39.0	35.4	28.6	30.2	29.5	29.3	1999
36.4	40.7	42.4	33.7	29.3	33.6	33.6	28.9	2000
33.6	37.0	35.9	34.7	26.7	29.7	27.9	28.7	2001
27.3	28.5	29.7	25.6	21.0	21.9	22.1	20.6	2002
28.0	30.4	29.8	28.4	20.7	23.0	21.7	22.1	2003
27.7	30.7	29.2	29.2	21.3	23.8	21.8	23.8	2004
24.3	27.7	24.5	28.3	18.7	21.4	18.1	23.1	2005
23.7	26.9	22.3	29.8	18.1	20.6	16.3	24.0	2006
21.1	24.1	19.7	27.2	16.5	18.9	14.8	22.3	2007
19.6	21.6	17.9	25.0	15.0	16.4	13.0	19.9	2008
16.2	17.6	15.6	18.8	11.1	12.1	10.0	13.9	2009
18.0	19.3	16.9	21.3	13.5	14.5	12.3	16.7	2010
17.8	20.4	16.4	23.4	14.0	15.5	12.3	18.7	2011
18.3	21.1	16.6	24.8	14.4	15.9	12.4	19.6	2012
18.0	20.2	15.1	24.0	14.0	15.5	11.3	19.0	2013
17.8	19.9	14.2	24.5	13.9	15.3	10.5	19.5	2014
19.4	21.3	15.3	26.4	15.0	16.3	11.3	20.8	2015
18.5	20.7	14.8	24.9	14.4	15.8	11.0	19.6	2016
18.3	20.6	14.9	24	14.2	16.1	11.1	19.1	2017
18.6	21.3	14.6	24.9	14.4	16.4	10.8	19.6	2018*

Rate per 1000 live births .

المعدل لكل ألف مولود حي

(1) Infant: less than one year old

(1) الرضع اقل من سنة

(2) Child: less than five years old

(2) الاطفال اقل من خمس سنوات

(\*) Preliminary Data

(\*) بيانات أولية

3 - 4 معدلات وفيات الامهات والرضع ( اقل من شهر - اقل من سنه ) (\*2018 -1988)

3 - 4 MATERNAL ,(NEONATAL &amp; INFANT) MORTALITY RATES (1988 - 2018\*)

معدل وفيات الامهات <sup>(2)</sup> Maternal Mortality Rate <sup>(2)</sup>	معدل وفيات الرضع اقل من سنه <sup>(1)</sup> Infant Mortality Rate Less than one year <sup>(1)</sup>	معدل وفيات اقل من شهر <sup>(1)</sup> Neonatal Mortality Rate Less than one month <sup>(1)</sup>	السنوات Years
50	43.3	12.7	1988
60	39.8	9.6	1989
50	37.8	9.4	1990
40	36.2	8.9	1991
50	36.3	9.0	1992
40	31.8	8.9	1993
40	30.8	9.8	1994
30	29.7	10.1	1995
30	28.7	10.9	1996
30	30.0	12.1	1997
30	29.1	11.4	1998
30	29.4	13.3	1999
30	31.5	16.4	2000
69	28.2	15.6	2001
67	24.8	8.5	2002
62	21.9	8.4	2003
65	22.6	10.0	2004
65	20.1	8.8	2005
65	19.4	9.6	2006
65	17.8	8.4	2007
65	15.7	7.1	2008
56	11.6	5.7	2009
54	14.0	6.4	2010
54	14.7	6.6	2011
50	15.2	6.5	2012
52	14.8	6.3	2013
52	14.6	6.2	2014
49	15.7	6.8	2015
46	15.1	6.6	2016
44	15.1	7.0	2017
(**)44	15.4	7.2	2018*

(1) Per 1000 live Births

(1) لكل 1000 مولود حي

(2) Per 100000 live Births

(2) لكل 100000 مولود حي

(\*\*) Estimated data.

(\*\*) البيان مقدر

## 3 - 5 معدل الخصوبة الكلي طبقاً لفئات السن في سنوات مختارة (1988-2014)

## 3 - 5 TOTAL FERTILITY RATES BY AGE GROUPS IN SELSELECTED YEARS (1988-2014)

( PER 1000 WOMEN IN THE AGE OF PREGNANCY )

( لكل 1000 من النساء في سن الحمل )

Age groups	2014	2008	2005	2003	2000	1998	1997	1995	1991	1988	
15-19	56	50	48	47	51	64	52	61	73	72	19-15
20-24	213	169	175	185	196	192	186	200	207	220	24-20
25-29	200	185	194	190	208	194	189	210	235	243	29-25
30-34	134	122	125	128	147	135	135	140	158	182	34-30
35-39	69	59	63	62	75	73	65	81	97	118	39-35
40-44	17	17	19	19	24	22	18	27	41	41	44-40
45-49	4	2	2	6	4	1	5	7	14	6	49-45
Total Fertility Rate <sup>(1)</sup>	3.5	3.0	3.1	3.2	3.5	3.4	3.3	3.6	4.1	4.4	معدل الخصوبة الكلي <sup>(1)</sup>

(1) Per woman

(1) لكل سيدة

## 3 - 6 توقع البقاء على قيد الحياة عند الميلاد طبقاً للنوع (2006-2019)

## 3 - 6 LIFE EXPECTANCY AT BIRTH, BY SEX (2006-2019)

Unit : (Year)

الوحدة : (سنة)

نسبة التغير السنوي Annual Change %		توقع البقاء Life Expectancy		السنوات Years
Females إناث	Males ذكور	Females إناث	Males ذكور	
-	-	69.1	66.5	2006
0.7	0.6	69.6	66.9	2007
0.6	0.7	70.0	67.4	2008
0.7	0.6	70.5	67.8	2009
0.6	0.6	70.9	68.2	2010
0.7	0.6	71.4	68.6	2011
0.4	0.6	71.7	69.0	2012
0.6	0.6	72.1	69.4	2013
0.6	0.4	72.5	69.7	2014
0.6	0.6	72.9	70.1	2015
0.5	0.6	73.3	70.5	2016
0.4	0.4	73.6	70.8	2017
0.5	0.6	74.0	71.2	2018
-0.1	-	75.1	72.7	2019

(\*) Life expectancy has been estimated by census 2006 data for (2006-2016), life expectancy has been estimated by census 2017 data for (2017-2019)

(\*) تم حساب توقع البقاء للسنوات (2006-2016) طبقاً لبيانات تعداد 2006، وتم حساب توقع البقاء للسنوات (2017-2019) طبقاً لبيانات تعداد 2017

Statistical yearbook - Vital Statistics

3 - 7 MARRIAGE & DIVORCE BY GOVERNORATE (2015- 2018)

Governorates	2018				2017			
	اشهادات الطلاق Divorces Proclamations		عقود الزواج Marriages Contracts		اشهادات الطلاق Divorces Proclamations		عقود الزواج Marriages Contracts	
	(1) المعدل Rate (1)	عدد No.	(1) المعدل Rate (1)	عدد No.	(1) المعدل Rate (1)	عدد No.	(1) المعدل Rate (1)	عدد No.
1 <b>Total</b>	<b>2.2</b>	<b>211 554</b>	<b>9.1</b>	<b>887 315</b>	<b>2.1</b>	<b>198 269</b>	<b>9.6</b>	<b>912 606</b>
2 Cairo	4.3	41 616	13.7	133 292	4.0	38 186	13.6	130 149
3 Alexandria	3.8	20 193	9.4	49 455	3.6	18 669	9.7	50 046
4 Port-Said	3.9	2 957	6.7	5 090	3.5	2 599	7.5	5 607
5 Suez	3.0	2 216	7.4	5 517	2.7	1 988	7.4	5 372
6 Damietta	2.3	3 560	8.2	12 509	2.2	3 356	8.8	13 178
7 Dakahlia	2.7	17 910	8.7	57 422	2.4	15 778	9.2	59 789
8 Sharkia	1.9	13 945	8.4	61 617	1.9	13 334	9.0	64 878
9 Kalyoubia	1.9	11 144	7.3	42 178	1.7	9 829	7.3	41 137
10 Kafr-El-Sheikh	1.3	4 636	8.4	28 877	1.3	4 419	9.1	30 676
11 Gharbia	1.9	9 870	8.4	42 698	1.9	9 500	9.0	45 067
12 Menoufia	1.3	5 612	7.4	32 508	1.3	5 484	7.3	31 489
13 Behera	1.5	9 540	8.3	52 335	1.4	8 987	9.0	55 976
14 Ismailia	2.3	3 032	7.6	10 135	2.1	2 771	7.9	10 369
15 Giza	2.7	24 210	7.7	67 866	2.8	24 265	7.9	68 068
16 Beni-Suef	1.6	5 093	10.0	32 630	1.5	4 650	9.7	30 755
17 Fayoum	1.3	4 998	9.1	33 862	1.4	4 966	10.7	38 512
18 Menia	1.0	5 842	9.8	55 747	1	5 499	9.9	54 721
19 Asyout	1.0	4 326	9.0	40 763	1	4 193	9.6	42 433
20 Suhag	1.1	5 840	8.6	44 239	1.3	6 273	10	49 773
21 Qena	2.0	6 390	12.8	41 905	1.9	6 016	13.8	43 827
22 Aswan	1.9	2 924	8.4	12 791	2.0	3 011	9.3	13 744
23 Luxor	1.4	1 812	8.4	10 767	1.3	1 644	8.9	11 183
24 Red Sea	2.3	851	5.8	2 148	1.8	652	5.8	2 108
25 ElWadi ElGidid	1.9	478	7.1	1 751	1.3	311	7.3	1 762
26 Matrouh	2.6	1 184	12.4	5 586	2.5	1 084	17	7 300
27 North Sinai	2.0	938	6.3	2 884	1.4	619	8.7	3 912
28 South Sinai	4.2	437	7.1	743	1.8	186	7.6	775

(1) Rate per thousand of population

3-7 الزواج والطلاق بمحافظات الجمهورية (2015 - 2018)

2016				2015				المحافظات
اشهادات الطلاق Divorces Proclamations		عقود الزواج Marriages Contracts		اشهادات الطلاق Divorces Proclamations		عقود الزواج Marriages Contracts		
المعدل <sup>(1)</sup> Rate <sup>(1)</sup>	عدد No.	المعدل <sup>(1)</sup> Rate <sup>(1)</sup>	عدد No.	المعدل <sup>(1)</sup> Rate <sup>(1)</sup>	عدد No.	المعدل <sup>(1)</sup> Rate <sup>(1)</sup>	عدد No.	
<b>2.1</b>	<b>192 079</b>	<b>10.3</b>	<b>938 526</b>	<b>2.2</b>	<b>199 867</b>	<b>10.9</b>	<b>969 399</b>	الجملة 1
3.9	36 771	14	133 146	4.7	43 713	16.6	155 191	القاهرة 2
3.7	18 353	10.5	51 868	3.4	17 251	10.1	52 625	الاسكندرية 3
3.5	2 404	10.2	7 002	3.6	2 163	10.8	6 796	بورسعيد 4
3.1	1 978	10.3	6 613	3.2	2 125	10.1	6 380	السويس 5
2.4	3 284	9.2	12 672	2.3	3 091	9.8	13 178	دمياط 6
2.4	14 535	10	61 182	2.3	13 978	10.3	61 983	الدقهلية 7
1.8	12 261	9.7	65 355	1.7	11 035	9.4	61 839	الشرقية 8
1.8	9 663	8.2	42 910	1.9	9 749	8.4	43 528	القليوبية 9
1.3	4 374	9.5	31 231	1.3	4 040	9.8	31 527	كفر الشيخ 10
1.9	9 369	10.1	49 252	1.9	8 998	9.9	47 541	الغربية 11
1.3	5 451	8.2	33 513	1.3	5 266	8.8	35 190	المنوفية 12
1.4	8 230	9.5	57 558	1.4	8 336	9.7	56 867	البحيرة 13
2.3	2 784	8.8	10 782	2.3	2 770	8.7	10 440	الاسماعيلية 14
3.2	24 729	9.7	76 272	4.0	30 521	12.9	98 617	الجيزة 15
1.4	4 177	9	26 917	1.6	4 579	9.1	26 368	بني سويف 16
1.5	5 072	10.4	34 610	1.6	4 990	10.2	32 897	الفيوم 17
1	5 377	9.7	52 401	1.1	5 640	9.8	51 188	المنيا 18
0.9	4 139	10.5	46 418	0.7	3 089	10.4	44 639	أسيوط 19
1.1	5 399	10.5	50 224	0.8	3 784	10.0	46 511	سوهاج 20
1.9	6 140	15.2	48 042	2.1	6 419	14.2	43 844	قتا 21
2.1	3 157	10	14 807	2.2	3 195	12.0	17 422	أسوان 22
1.4	1 651	10.6	12 519	1.4	1 629	9.6	11 103	الأقصر 23
1.7	591	6.4	2 288	2.5	890	9.4	3 272	البحر الاحمر 24
1.4	320	8	1 856	1.4	325	8.1	1 848	الوادى الجديد 25
2.2	1 032	9.2	4 413	2.2	1 002	8.4	3 861	مطروح 26
1.5	657	9.5	4 294	2.2	967	9.1	4019	شمال سيناء 27
1.1	181	2.2	381	1.9	322	4.3	725	جنوب سيناء 28

(1) المعدل لكل ألف نسمة



Statistical yearbook - Vital Statistics

3 -8 PERCENTAGE DISTRIBUTION OF DEATHS BY DEATH CAUSE & SEX(2013 -2018\*)

(%)

Sex Death Causes	* 2018			2017			2016		
	جملة Total	اناث Females	ذكور Males	جملة Total	اناث Females	ذكور Males	جملة Total	اناث Females	ذكور Males
1 <b>Total</b>	<b>100</b>	<b>100</b>	<b>100</b>	<b>100</b>	<b>100</b>	<b>100</b>	<b>100</b>	<b>100</b>	<b>100</b>
2 Certain Infections & Parasitic Diseases	3.2	3.1	3.2	3.5	3.4	3.6	3.6	3.5	3.8
3 Neoplasms	6.4	6.4	6.4	6.3	6.4	6.3	6.4	6.4	6.4
4 Diseases of The Blood & Blood -Forming Organs & Certain Disorders Involving The Immune Mechanism	0.9	1.0	0.9	1.0	1.0	0.9	1.1	1.2	1.0
5 Endocrine ,Nutritional & Absorption Diseases	1.8	2.2	1.5	2.0	2.3	1.7	2.1	2.5	1.8
6 Mental & Behavioural Disorders	0.1	0.1	0.1	0.1	0.1	0.1	0.1	0.1	0.1
7 Diseases of The Nervous System	0.9	0.9	0.8	0.9	1	0.9	1.0	1.1	1.0
8 Diseases of The Eye & Its Annex	0	0	0	0	0	0	0	0	0
9 Disorders of The Ear & Mastoid Process	0	0	0	0	0	0	0	0	0
10 Diseases of The Circulatory System	52.1	53.4	51.0	49.1	50.6	47.9	46.8	48.1	45.8
11 Diseases of The Respiratory System	8.5	8.7	8.4	7.8	8	7.7	7.9	8.1	7.8
12 Diseases of The Digestive System	8.1	7.3	8.8	9.9	8.9	10.7	10.1	9.0	11.0
13 Diseases of the Skin & Subcutaneous Tissues	0.1	0.1	0.1	0.1	0.2	0.1	0.1	0.1	0.1
14 Diseases of The Musculoskeletal System & Connective Tissue	0.0	0	0.0	0.0	0.1	0.0	0	0.1	0.0
15 Diseases of The Genitourinary System	3.9	3.9	3.8	4	4.0	4.0	4	4.0	3.9
16 Pregnancy ,Child-birth & Puerperium	0.1	0.1	0.0	0.1	0.1	0.0	0.1	0.1	0.0
17 Certain conditions originating in the Perinatal period	0.6	0.6	0.7	0.7	0.6	0.7	0.7	0.7	0.8
18 Deformations & Chromosomal Abnormalities	1.3	1.3	1.2	1.4	1.4	1.3	1.4	1.4	1.4
19 Symptoms ,Signs & Abnormal Clinical & Laboratory Findings,not elsewhere Classified	8.5	9.0	8.1	9.3	10	8.7	10.7	11.7	9.9
20 External Causes of Morbidity & Mortality	3.5	1.8	4.9	3.8	1.9	5.4	3.7	1.9	5.2

According to the International classification of diseases (Tenth review)

(\*) Preliminary data

3 - 8 التوزيع النسبي للوفيات طبقاً لأسباب الوفاة والنوع (2013-2018)\*

									(%)
2015			2014			2013			النوع
جملة Total	اناث Females	ذكور Males	جملة Total	اناث Females	ذكور Males	جملة Total	اناث Females	ذكور Males	
100	100	100	100	100	99.1	100	100	100	1 الاجمالي
3.7	3.5	3.9	3.5	3.3	3.6	3	2.9	3	2 امراض معدية وطفيلية معينة
6.1	6.1	6.0	6.7	6.7	6.7	6.5	6.6	6.5	3 الأورام
1.1	1.1	1.1	1.1	1.2	1.0	1.2	1.3	1.1	4 امراض الدم وأعضاء تكوين الدم واضطرابات معينة تتضمن أجهزة المناعة
2.3	2.7	2.0	4.7	5.6	3.9	2.2	2.7	1.9	5 امراض الغدد الصماء والتغذية والامتنصاص
0.2	0.2	1.0	0.2	0.2	0.2	0.1	0.1	0.1	6 الاضطرابات العقلية والسلوكية
1.2	1.3	1.1	1.2	1.3	1.2	1.3	1.3	1.2	7 امراض الجهاز العصبي
=	=	=	=	=	=	-	-	-	8 امراض العين وملحقاتها
=	=	=	=	=	=	-	-	-	9 الاضطرابات بالأذن والنتوء الحلمي
47.2	48.6	46.0	48.1	50.9	45.9	48.5	50.2	47.7	10 امراض الجهاز الدوري
7.8	7.9	7.7	8.0	8.3	7.8	8.1	8.4	7.8	11 امراض الجهاز التنفسي
10.1	8.7	11.2	11.1	9.5	12.3	11.1	9.4	12.4	12 امراض الجهاز الهضمي
0.1	0.1	0.1	0.1	0.1	0.1	0.1	0.1	0	13 امراض الجلد والنسيج الخلوي تحت الجلد
0	0.1	0.0	0.1	0.1	=	0.1	0.1	0.1	14 امراض الجهاز العضلي الهيكلي والنسيج الضام
3.9	3.9	4.0	3.9	3.9	3.9	3.9	3.8	3.9	15 امراض الجهاز التناسلي البولي
0.1	0.2	0.0	0.1	0.2	0.0	0.1	0.2	-	16 الحمل والولادة والنفاس
0.7	0.7	0.8	0.9	0.9	0.1	0.8	0.7	0.8	17 حالات معينة تتشأفى خلال فترة الولادة
1.4	1.4	1.3	1.6	1.7	1.6	1.6	1.7	1.6	18 التشوهات والعاهات والشذوذات الصبغوية
10.4	11.6	9.5	5.2	5.4	5	8.0	8.8	7.3	19 أعراض وعلامات ونتائج سريرية ومخبرية شاذة لم تصنف في مكان آخر
3.7	1.9	5.2	4.0	1.9	5.8	3.3	1.5	4.7	20 الأسباب الخارجية للمراضة والاماتة

طبقاً للتصنيفات الدولية للأمراض (المراجعة العاشرة)

(\*) بيانات أولية

## 3 - 9 اعداد ومعدلات الزواج والطلاق (1985 - 2018)

## 3 - 9 NUMBER AND RATES OF MARRIAGE &amp; DIVORCE (1985-2018)

إشهادات الطلاق		عقود الزواج		السنوات Years
Divorces Proclamations		Marriages Contracts		
معدل <sup>(1)</sup> Rate <sup>(1)</sup>	العدد(بالآلف) NO. (000)	معدل <sup>(1)</sup> Rate <sup>(1)</sup>	العدد(بالآلف) NO. (000)	
1.5	73	8.5	414	1985
1.4	69	8.5	406	1986
1.4	69	8.2	402	1987
1.4	68	8.2	413	1988
1.2	65	7.5	392	1989
1.3	67	7.6	405	1990
1.2	64	7.3	400	1991
1.1	62	7.1	397	1992
1.1	65	7.8	432	1993
1.2	67	7.9	452	1994
1.1	68	8.3	471	1995
1.2	69	8.2	489	1996
1.2	71	8.2	494	1997
1.2	72	8.2	504	1998
1.2	73	8.4	525	1999
1.1	69	9.3	592	2000
1.1	70	7.0	458	2001
1.1	70	7.7	511	2002
1.0	70	7.9	537	2003
0.9	64	7.9	551	2004
0.9	65	7.4	523	2005
0.9	65	7.3	523	2006
1.1	78	8.4	615	2007
1.1	84	8.8	660	2008
1.8	141	9.9	759	2009
1.9	149	11.0	865	2010
1.9	152	11.2	898	2011
1.9	155	11.2	922	2012
1.9	163	10.7	909	2013
2.1	180	11.0	954	2014
2.2	199	10.9	969	2015
2.1	192	10.3	939	2016
2.1	198	9.6	912	2017
2.2	212	9.1	887	2018

(1) Rate per thousand of population

(1) لكل الف من السكان

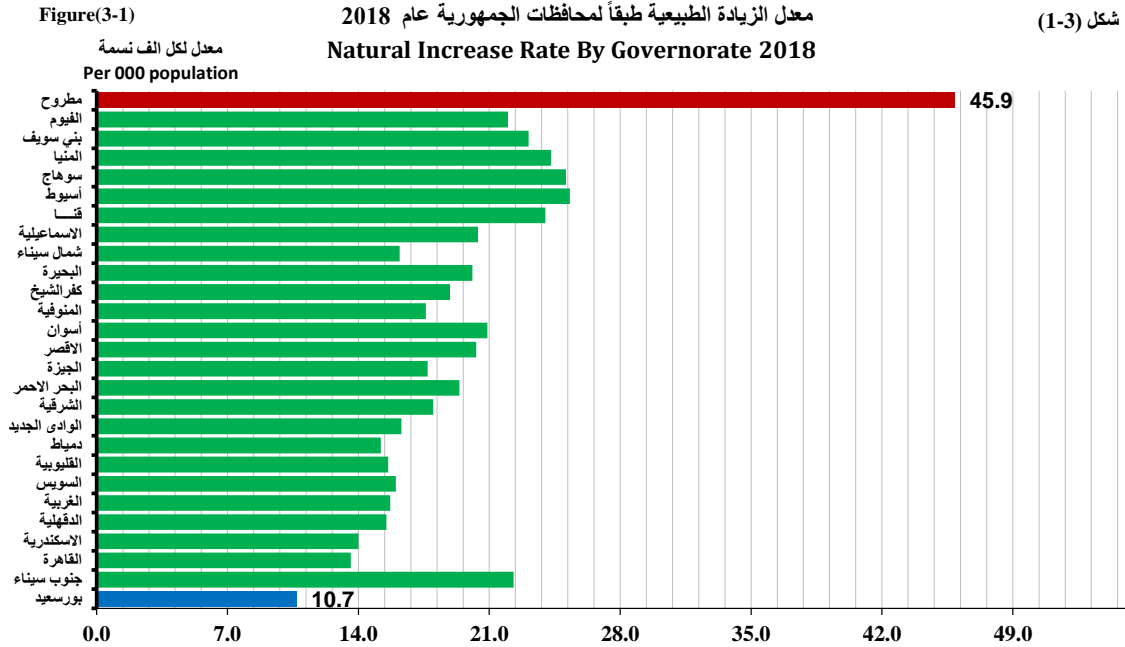


Figure No. (3-2) **معدل وفيات الرضع (حضر - ريف) (2000-2018)** (شكل رقم 2 - 3)  
**Infant Mortality Rate (Urban - Rural) (2000- 2018)**

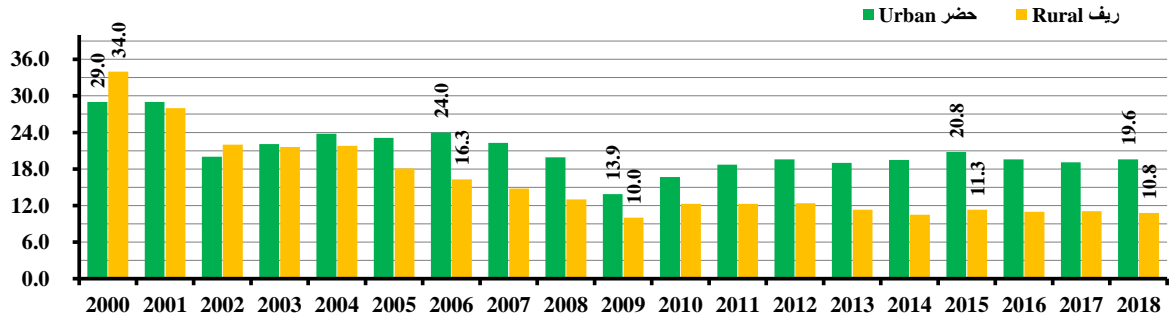


Figure No. (3-3) **معدل وفيات أقل من شهر و الرضع الأقل من سنة (2000-2018)** (شكل رقم 3 - 3)  
**Neonatal and infant mortality Rates (2000-2018)**

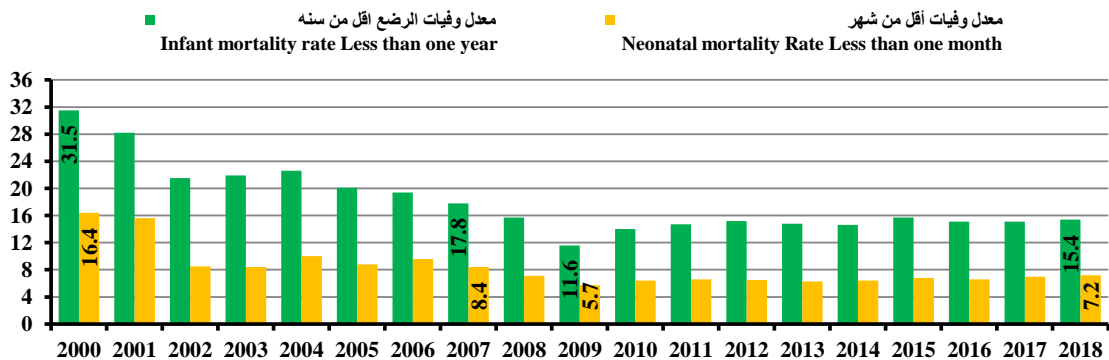


Figure (3-4)

شكل رقم (3 - 4)

معدل الخصوبة الكلي في سنوات مختارة (1980 - 2014)  
 لكل سيدة  
 (2014 - 1980) Total Fertility Rate Selected Years

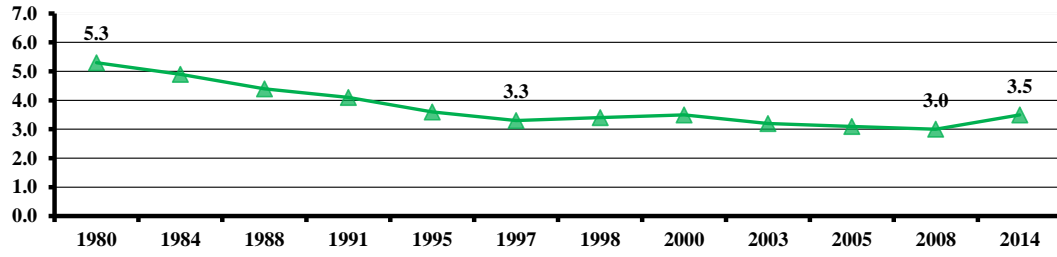


Figure (3-5)

شكل رقم (3 - 5)

معدل الزواج والطلاق (\* 2018 - 2000)  
 Marriage & Divorce Rates (2000- 2018\*)

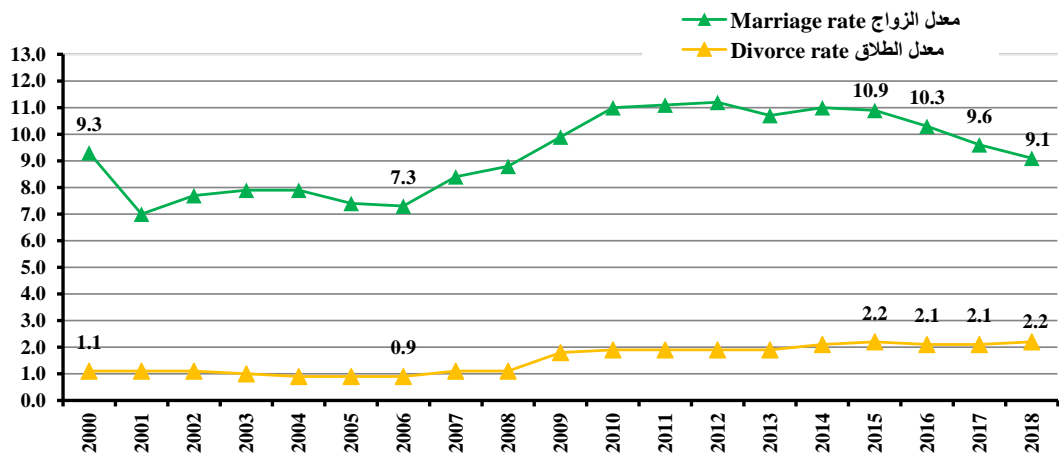


Figure (3-6)

شكل رقم (3 - 6)

توقع البقاء على قيد الحياة عند الميلاد طبقاً للنوع (2006-2019)  
 Life Expectancy At Birth By Sex (2006-2019)

