

Statistics South Africa

2000
Stats in brief

Issued free of charge by Statistics South Africa

Statistics South Africa (Stats SA) is the government body which, in terms of the Statistics Act of 1999, is authorised to compile and publish official statistics.

Stats SA information

User information services: (012) 310-8600
Fax: (012) 310-8500
Switchboard: (012) 310-8911
Fax: (012) 322-3374

E-mail: info@statssa.pwv.gov.za
Website: www.statssa.gov.za



**Statistics
South Africa**

Stats in brief 2000

Statistics South Africa

Published by Statistics South Africa
Private Bag X44
Pretoria
0001

ISBN 0-621-29480-2

© Statistics South Africa, 2000
Second impression

Data from this publication may be reproduced, applied or processed, provided Statistics South Africa (Stats SA) is acknowledged as the original source of the data; that it is specified that any application and/or analysis of the data is the result of the user's independent processing of the data; and that neither the basic data nor any reprocessed version or application thereof may be sold or offered for sale in any form whatsoever without the prior permission of Stats SA.

This edition of *Stats in brief* is based on the most up-to-date data and information that Stats SA could access in mid-1999. However, South Africa's most recent population census was undertaken in October 1996, and information sourced from its results – released during 1998 and 1999 – cannot be updated until the next population census takes place.

Previous editions of *Stats in brief* included a section on foreign trade. This has been excluded, as Stats SA has discontinued its series on foreign trade. Literacy figures are also not included in this edition as these were not available yet for analysis.

Due to rounding of numbers, totals do not always add up to the totals shown.

South Africa



Contents

	Page
Geography and climate	1
Political dispensation	3
Demography	6
Tourism and migration	18
Housing	22
Education	27
Health and welfare	32
Labour	40
Agriculture	44
Mining	46
Manufacturing	48
Energy	50
Construction	52
Internal trade	53
Transport	54
Communication	56
National accounts	57
Government finances	59
Prices	60
Purchasing power	63
Price increases	64
Exchange rates	65

PLEASE TURN THE PAGE

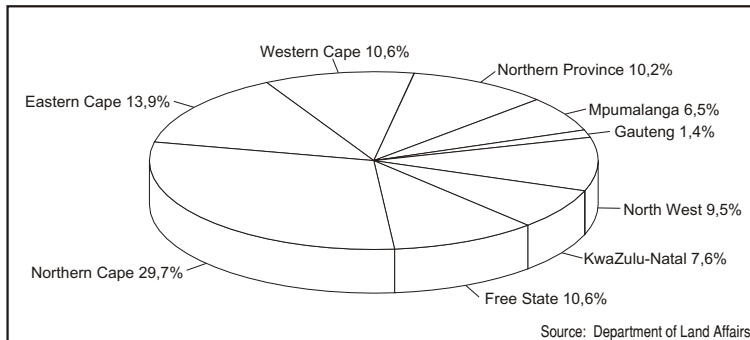
Geography and climate

1.1 Area by province (km²)

Eastern Cape	Free State	Gauteng	KwaZulu-Natal	Mpumalanga	Northern Cape	Northern Province	North West	Western Cape	South Africa
169 580	129 480	17 010	92 100	79 490	361 830	123 910	116 320	129 370	1 219 090

Source: Department of Land Affairs

Area by province in South Africa



Northern Cape, the largest province, covers 29,7% of the total area of South Africa, while Gauteng, the smallest province, comprises only 1,4% of the total land area.

1.2 Climate of provincial capitals

	Eastern Cape	Free State	Gauteng	KwaZulu-Natal	Mpumalanga	Northern Cape	Northern Province	North West	Western Cape
	Bisho	Bloemfontein	Johannesburg	Pietermaritzburg ¹	Nelspruit	Kimberley	Pietersburg	Mafikeng	Cape Town
Average temperature (C)									
January	22,1	23,0	20,1	22,9	24,0	25,3	22,6	24,1	20,9
July	13,8	7,7	10,4	12,9	14,8	10,8	12,2	12,0	12,2
Average hours of sunshine									
January	..	296	250	185	216	307	253	280	338
July	..	273	284	251	265	287	279	285	193
Average rainfall (mm)									
January	62	83	125	141	127	57	82	117	15
July	31	8	4	11	10	7	3	3	82
Average number of rain days									
January	13	11	16	18	14	10	10	13	6
July	5	2	1	3	2	2	1	1	12
Average annual rainfall (mm)	606	559	713	844	767	414	478	539	515

¹ Information on Cedara used for Pietermaritzburg.

-- Data not available.

Source: Weather Bureau, Department of Environmental Affairs and Tourism

As a winter rainfall area, the Western Cape is the only province in the country with a Mediterranean climate.

Political dispensation

2.1 National Assembly

	Number of seats	
	1994	1999
African Christian Democratic Party (ACDP)	2	6
African National Congress (ANC)	252	266
Afrikaner Eenheidsbeweging (AEB) ¹		1
Azanian People's Organisation (Azapo)		1
Democratic Party (DP)	7	38
Federal Alliance (FA)		2
Freedom Front (FF)	9	3
Inkatha Freedom Party (IFP)	43	34
Minority Front (MF)		1
New National Party (NNP) ²	82	28
Pan Africanist Congress (PAC)	5	3
United Christian Democratic Party (UCDP)		3
United Democratic Movement (UDM)		14
Total	400	400

¹ Only known by its Afrikaans name, which translates into Afrikaner Unity Movement.

² Formerly the National Party (NP).

Source: Independent Electoral Commission, 1999

A comparison between the 1994 and 1999 election results shows that:

- (i) the ANC increased its representation from 252 to 266 seats;
- (ii) the Democratic Party became the official opposition after increasing its number of seats from seven to 38;
- (iii) the NNP (new name for NP) lost its official opposition status after its number of seats decreased from 82 to 28;
- (iv) the number of seats held by the IFP decreased from 43 to 34; and
- (v) the number of parties with seats in the National Assembly increased from seven to 13.

2.2 Provincial legislatures – seat allocation

	Eastern Cape	Free State	Gauteng	KwaZulu-Natal	Mpumalanga	Northern Cape	Northern Province	North West	Western Cape	Total
African Christian Democratic Party										
1994			1	1					1	3
1999			1	1			1		1	4
African National Congress										
1994	48	24	50	26	25	15	38	26	14	266
1999	47	25	50	32	26	20	44	27	18	289
Democratic Party										
1994	1		5	2		1			3	12
1999	4	2	13	7	1	1	1	1	5	35
Federal Alliance										
1994										
1999			1							1
Freedom Front										
1994		2	5		2	2	1	1	1	14
1999		1	1		1	1		1		5
Inkatha Freedom Party										
1994			3	41						44
1999			3	34						34
Minority Front										
1994				1						1
1999				2						2

2.2 Provincial legislatures – seat allocation

	Eastern Cape	Free State	Gauteng	KwaZulu-Natal	Mpumalanga	Northern Cape	Northern Province	North West	Western Cape	Total
New National Party¹										
1994	6	4	21	9	3	12	1	3	23	82
1999	2	2	3	3	1	8	1	1	17	38
Pan Africanist Congress										
1994	1		1	1						3
1999	1						1			2
United Christian Democratic Party										
1994										
1999								3		3
United Democratic Movement										
1994										
1999	9		1	1	1		1		1	14
Total										
1994	56	30	86	81	30	30	40	30	42	425
1999	63	30	73	80	30	30	49	33	42	430

¹ Formerly the National Party (NP).

Source: Independent Electoral Commission, 1999

The ANC holds more than 50% of seats in all provinces, except KwaZulu-Natal and Western Cape.

Demography

3.1 Mid-year population estimates, 1991-1999

1991 ¹	1992	1993	1994	1995	1996	1997	1998	1999	1996 ²
36 199	36 992	37 802	38 631	39 477	40 342	41 227	42 131	43 054	40 584

¹ The 1991 figures are population estimates based on the 1996 population census data.

Source: Stats SA

The calculations were based on the assumption that the 'inferred' growth rates for the period 1996-2001 were applicable for the period 1991-1996.

² 1996 population census figures.

3.2 Proportional breakdown and growth rates of the population of South Africa by population group

	Percentages ¹	Percentage growth rate per annum ²
	1996	1996-2001
African	76,7	2,4
Coloured	8,9	1,9
Indian	2,6	1,6
White	10,9	0,9
Unspecified/Other	0,9	1,5
Total	100,0	2,2

Source: Stats SA

¹ The general indication is that over the past two decades the proportion of Africans has slowly been increasing and that of whites has slowly been decreasing. The proportion of Indians and coloureds has remained largely constant. The proportions obtained from previous censuses are not reported here because of their lack of comprehensiveness.

² These average annual growth rates are based on information derived from a single census instead of two censuses. The estimates of fertility and mortality are derived from the 1996 census. The 1996 population figures have been projected to 2001. The growth rates per annum have been computed from these two sets of figures. These growth rates are 'inferred' growth rates, and not actual growth rates. The growth rates are provisional and may change if the estimates of fertility and mortality are modified, or if non-zero estimates of international migration are used in the projection.

3.3 Population of South Africa by province and gender, 1996

	Male	Female	Total
Eastern Cape	2 908 056	3 394 469	6 302 525
Free State	1 298 348	1 335 156	2 633 504
Gauteng	3 750 845	3 597 578	7 348 423
KwaZulu-Natal	3 950 527	4 466 493	8 417 021
Mpumalanga	1 362 028	1 438 683	2 800 711
Northern Cape	412 681	427 639	840 321
Northern Province	2 253 072	2 676 296	4 929 368
North West	1 649 835	1 704 990	3 354 825
Western Cape	1 935 494	2 021 381	3 956 875
South Africa	19 520 887	21 062 685	40 583 573

Source: Census '96

KwaZulu-Natal has the largest population in the country (8,4 million), followed by Gauteng (7,3 million).

3.4 Population group by province, 1996 (numbers)

	Eastern Cape	Free State	Gauteng	KwaZulu-Natal	Mpumalanga	Northern Cape	Northern Province	North West	Western Cape	South Africa
African	5 448 495	2 223 940	5 147 444	6 880 652	2 497 834	278 633	4 765 255	3 058 686	826 691	31 127 631
Coloured	468 532	79 038	278 692	117 951	20 283	435 368	7 821	46 652	2 146 109	3 600 446
Indian	19 356	2 805	161 289	790 813	13 083	2 268	5 510	10 097	40 376	1 045 596
White	330 294	316 459	1 702 343	558 182	253 392	111 844	117 878	222 755	821 551	4 434 697
Unspecified/Other	35 849	11 262	58 654	69 423	16 120	12 208	32 904	16 635	122 148	375 204
Total	6 302 525	2 633 504	7 348 423	8 417 021	2 800 711	840 321	4 929 368	3 354 825	3 956 875	40 583 573

Source: Census '96

Africans constitute the majority population in all provinces, except Western and Northern Cape, where coloureds form the majority.

3.5 Gender by province, 1996 (percentages)

	Eastern Cape	Free State	Gauteng	KwaZulu-Natal	Mpumalanga	Northern Cape	Northern Province	North West	Western Cape	South Africa
Male	46,1	49,3	51,0	46,9	48,6	49,1	45,7	49,2	48,9	48,1
Female	53,9	50,7	49,0	53,1	51,4	50,9	54,3	50,8	51,1	51,9
Total	100,0	100,0	100,0	100,0	100,0	100,0	100,0	100,0	100,0	100,0

Source: Census '96

3.6 Urban and non-urban population by province, 1996 (percentages)

	Eastern Cape	Free State	Gauteng	KwaZulu-Natal	Mpumalanga	Northern Cape	Northern Province	North West	Western Cape	South Africa
Urban population	36,6	68,6	97,0	43,1	39,1	70,1	11,0	34,9	88,9	53,7
Non-urban population	63,4	31,4	3,0	56,9	60,9	29,9	89,0	65,1	11,1	46,3
Total	100,0	100,0	100,0	100,0	100,0	100,0	100,0	100,0	100,0	100,0

Source: Census '96

3.7 Mid-year population estimates by province and gender, 1991-1999 (thousands)

	Mid-year population estimates						Population census ¹	Mid-year population estimates		
	1991	1992	1993	1994	1995	1996	1996	1997	1998	1999
Eastern Cape										
Male	2 578	2 637	2 698	2 761	2 825	2 890	2 908	2 957	3 025	3 105
Female	3 105	3 158	3 212	3 267	3 322	3 379	3 394	3 436	3 495	3 554
Total	5 683	5 796	5 910	6 027	6 147	6 269	6 303	6 393	6 519	6 659
Free State										
Male	1 163	1 187	1 213	1 238	1 264	1 291	1 298	1 318	1 346	1 310
Female	1 210	1 233	1 256	1 280	1 304	1 328	1 335	1 353	1 379	1 405
Total	2 373	2 420	2 469	2 518	2 568	2 619	2 634	2 672	2 725	2 715
Gauteng										
Male	3 354	3 419	3 494	3 570	3 649	3 729	3 751	3 810	3 894	3 992
Female	3 210	3 280	3 352	3 425	3 500	3 576	3 598	3 654	3 734	3 815
Total	6 564	6 699	6 846	6 996	7 148	7 305	7 348	7 465	7 628	7 807
KwaZulu-Natal										
Male	3 489	3 572	3 658	3 745	3 834	3 925	3 951	4 019	4 114	4 225
Female	4 048	4 124	4 202	4 281	4 362	4 444	4 466	4 527	4 612	4 699
Total	7 537	7 696	7 859	8 026	8 195	8 369	8 417	8 546	8 726	8 924
Mpumalanga										
Male	1 184	1 216	1 249	1 282	1 317	1 352	1 362	1 389	1 426	1 469
Female	1 270	1 300	1 331	1 363	1 396	1 429	1 439	1 464	1 499	1 534
Total	2 454	2 516	2 580	2 645	2 713	2 782	2 801	2 852	2 924	3 003

¹ The 1996 population census was conducted in October.

3.7 Mid-year population estimates by province and gender, 1991-1999 (thousands)

	Mid-year population estimates						Population census ¹	Mid-year population estimates		
	1991	1992	1993	1994	1995	1996	1996	1997	1998	1999
Northern Cape										
Male	381	387	393	399	405	411	413	417	424	431
Female	398	404	409	415	420	426	428	432	438	444
Total	779	790	802	813	825	837	840	849	861	875
Northern Province										
Male	1 892	1 958	2 023	2 091	2 161	2 233	2 253	2 307	2 384	2 472
Female	2 345	2 404	2 465	2 528	2 592	2 658	2 676	2 725	2 795	2 865
Total	4 237	4 362	4 489	4 619	4 753	4 891	4 929	5 033	5 179	5 337
North West										
Male	1 465	1 498	1 533	1 568	1 603	1 640	1 650	1 677	1 715	1 760
Female	1 531	1 563	1 595	1 628	1 661	1 695	1 705	1 730	1 766	1 802
Total	2 996	3 061	3 127	3 195	3 264	3 335	3 355	3 407	3 481	3 562
Western Cape										
Male	1 742	1 777	1 813	1 850	1 887	1 925	1 935	1 964	2 003	2 050
Female	1 842	1 875	1 908	1 942	1 977	2 012	2 021	2 047	2 084	2 121
Total	3 584	3 652	3 721	3 792	3 863	3 937	3 957	4 011	4 087	4 171
South Africa										
Male	17 248	17 651	18 074	18 504	18 945	19 396	19 521	19 858	20 331	20 814
Female	18 959	19 341	19 730	20 129	20 534	20 947	21 062	21 368	21 802	22 239
Total	36 207	36 992	37 803	38 631	39 476	40 344	40 584	41 228	42 130	43 054

¹ The 1996 population census was conducted in October.

Source: Stats SA

3.8 Mid-year population estimates by population group and gender, 1991-1999 (thousands)

	Mid-year population estimates						Population census ¹	Mid-year population estimates		
	1991	1992	1993	1994	1995	1996	1996	1997	1998	1999
African										
Male	12 986	13 332	13 688	14 052	14 426	14 810	14 917	15 203	15 606	16 019
Female	14 414	14 740	15 072	15 411	15 758	16 112	16 211	16 474	16 843	17 221
Total	27 400	28 072	28 760	29 464	30 184	30 922	31 128	31 677	32 449	33 240
Coloured										
Male	1 567	1 599	1 632	1 666	1 700	1 735	1 745	1 771	1 807	1 844
Female	1 687	1 718	1 749	1 781	1 813	1 846	1 856	1 880	1 914	1 948
Total	3 254	3 317	3 381	3 447	3 514	3 582	3 600	3 651	3 721	3 793
Indian										
Male	469	477	485	493	501	510	512	519	527	536
Female	492	499	507	515	523	531	533	539	548	556
Total	960	976	992	1 008	1 024	1 041	1 046	1 058	1 075	1 092
White										
Male	2 051	2 072	2 093	2 114	2 135	2 157	2 163	2 178	2 200	2 222
Female	2 187	2 203	2 219	2 235	2 251	2 268	2 272	2 284	2 300	2 317
Total	4 238	4 275	4 312	4 349	4 387	4 424	4 435	4 462	4 500	4 539

¹ The 1996 population census was conducted in October.

3.8 Mid-year population estimates by population group and gender, 1991-1999 (thousands)

	Mid-year population estimates						Population census ¹	Mid-year population estimates		
	1991	1992	1993	1994	1995	1996	1996	1997	1998	1999
Other and unspecified										
Male	169	172	175	178	181	184	184	187	190	193
Female	178	180	183	185	188	190	191	193	195	198
Total	347	352	357	363	368	374	375	379	385	391
South Africa										
Male	17 242	17 652	18 073	18 503	18 943	19 396	19 521	19 858	20 330	20 814
Female	18 958	19 340	19 730	20 127	20 533	20 947	21 063	21 370	21 800	22 240
Total	36 199	36 992	37 802	38 631	39 477	40 343	40 584	41 227	42 130	43 054

¹ The 1996 population census was conducted in October.

Source: Stats SA

3.9 Mid-year population estimates according to urban and non-urban areas and gender, 1991-1999 (thousands)

	Mid-year population estimates						Population census ¹	Mid-year population estimates		
	1991	1992	1993	1994	1995	1996	1996	1997	1998	1999
Urban										
Male	9 516	9 725	9 938	10 155	10 377	10 605	10 668	10 837	11 074	11 316
Female	10 034	10 231	10 431	10 635	10 843	11 055	11 114	11 271	11 492	11 716
Total	19 550	19 955	20 368	20 790	21 220	21 660	21 782	22 108	22 565	23 032
Non-urban										
Male	7 725	7 927	8 135	8 348	8 566	8 790	8 853	9 020	9 256	9 498
Female	8 924	9 110	9 299	9 493	9 691	9 893	9 949	10 099	10 309	10 524
Total	16 649	17 037	17 434	17 841	18 257	18 683	18 802	19 119	19 565	20 022
South Africa										
Male	17 241	17 652	18 072	18 501	18 944	19 395	19 521	19 857	20 330	20 814
Female	18 958	19 340	19 730	20 128	20 534	20 947	21 063	21 370	21 800	22 240
Total	36 199	36 992	37 802	38 631	39 477	40 342	40 584	41 227	42 131	43 054

¹ The 1996 population census was conducted in October

Source: Stats SA

3.10 Distribution of the population by home language within province, 1996¹ (percentages)

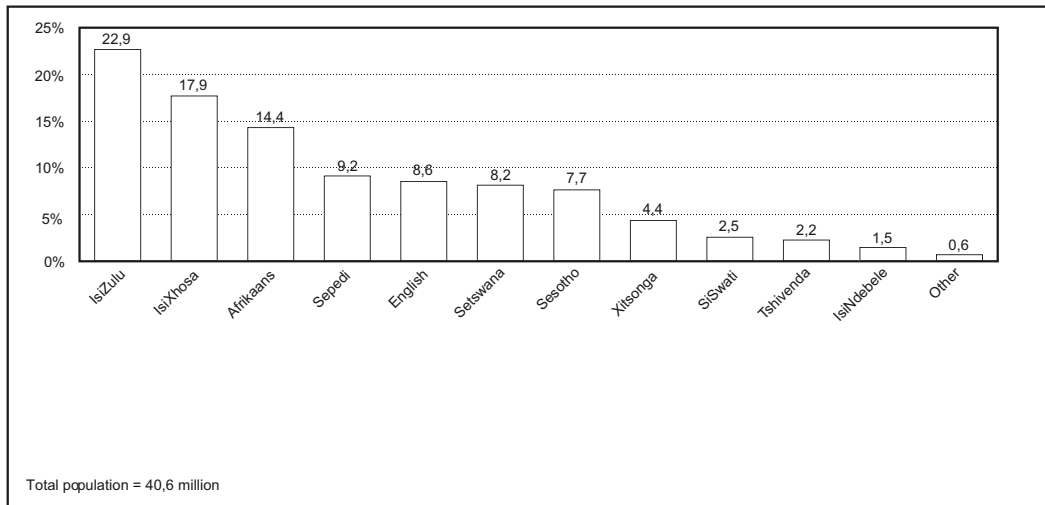
	Eastern Cape	Free State	Gauteng	KwaZulu-Natal	Mpumalanga	Northern Cape	Northern Province	North West	Western Cape	South Africa
Afrikaans	9,6	14,5	16,7	1,6	8,3	69,3	2,2	7,5	59,2	14,4
English	3,7	1,3	13,0	15,8	2,0	2,4	0,4	1,0	20,3	8,6
IsiNdebele	0,0	0,2	1,6	0,0	12,5	0,0	1,5	1,3	0,1	1,5
Sepedi	0,0	0,2	9,5	0,0	10,5	0,0	52,7	4,0	0,0	9,2
Sesotho	2,2	62,1	13,1	0,5	3,2	0,9	1,1	5,1	0,4	7,7
SiSwati	0,0	0,1	1,3	0,1	30,0	0,0	1,2	0,5	0,0	2,5
Xitsonga	0,0	0,5	5,3	0,0	3,5	0,0	22,6	4,7	0,0	4,4
Setswana	0,0	6,5	7,9	0,0	2,7	19,9	1,4	67,2	0,1	8,2
Tshivenda	0,0	0,1	1,4	0,0	0,1	0,0	15,5	0,4	0,0	2,2
IsiXhosa	83,8 ²	9,4	7,5	1,6	1,3	6,3	0,2	5,4	19,1	17,9
IsiZulu	0,4	4,8	21,5	79,8	25,4	0,3	0,7	2,5	0,1	22,9
Other	0,2	0,3	1,3	0,5	0,4	0,8	0,3	0,5	0,6	0,6
Total	100,0	100,0	100,0	100,0	100,0	100,0	100,0	100,0	100,0	100,0
Total (population)	6 302 525	2 633 504	7 348 423	8 417 021	2 800 711	840 321	4 929 368	3 354 825	3 956 875	40 583 573

¹ Excluding 'Unspecified'.

Source: Census '96

² Interpretation: In Eastern Cape 83,8% of the population's home language is isiXhosa, followed by Afrikaans (9,6%) and English (3,7%).

3.11 Percentage of the population speaking each official language as their first home language, 1996



IsiZulu (22,9%) is the most commonly-spoken language in SA, followed by isiXhosa (17,9%) and Afrikaans (14,4%).

3.12 Home language by population group, 1996 (numbers)

	African	Coloured	Indian	White	Unspecified/Other	Total
Afrikaans	217 606	2 931 489	15 135	2 558 956	88 361	5 811 547
English	113 132	584 101	974 654	1 711 603	73 977	3 457 467
IsiNdebele	578 067	2 507	107	3 427	2 851	586 961
IsiXhosa	7 148 721	12 303	688	2 832	31 574	7 196 118
IsiZulu	9 132 569	8 502	1 787	3 448	53 838	9 200 144
Sepedi	3 674 320	2 173	319	1 316	17 718	3 695 846
Sesotho	3 083 047	6 406	267	1 737	12 740	3 104 197
SiSwati	1 006 804	1 553	201	316	4 320	1 013 193
Setswana	3 272 720	12 935	191	1 809	14 118	3 301 774
Tshivenda	871 130	302	139	177	4 661	876 409
Xitsonga	1 745 216	883	306	736	8 965	1 756 105
Other	89 494	7 094	38 605	87 621	5 462	228 275
Unspecified	194 804	30 199	13 196	60 721	56 619	355 538
Total	31 127 631	3 600 446	1 045 596	4 434 697	375 204	40 583 573

Source: Census '96

Tourism and migration

4.1 Arrivals and departures (thousands)

	Arrivals ¹			Departures ¹		
	Foreign travellers ²	SA residents ³	Total	Foreign travellers ²	SA residents ³	Total
1993	3 358	1 475	4 833	2 778	1 516	4 294
1994	3 897	1 728	5 625	3 159	1 766	4 925
1995	4 684	2 468	7 152	3 817	2 520	6 337
1996	5 186	2 875	8 061	4 282	2 882	7 164
1997	5 170	2 962	8 132	4 322	2 926	7 248
1998	5 898	3 408	9 306	5 042	3 363	8 405

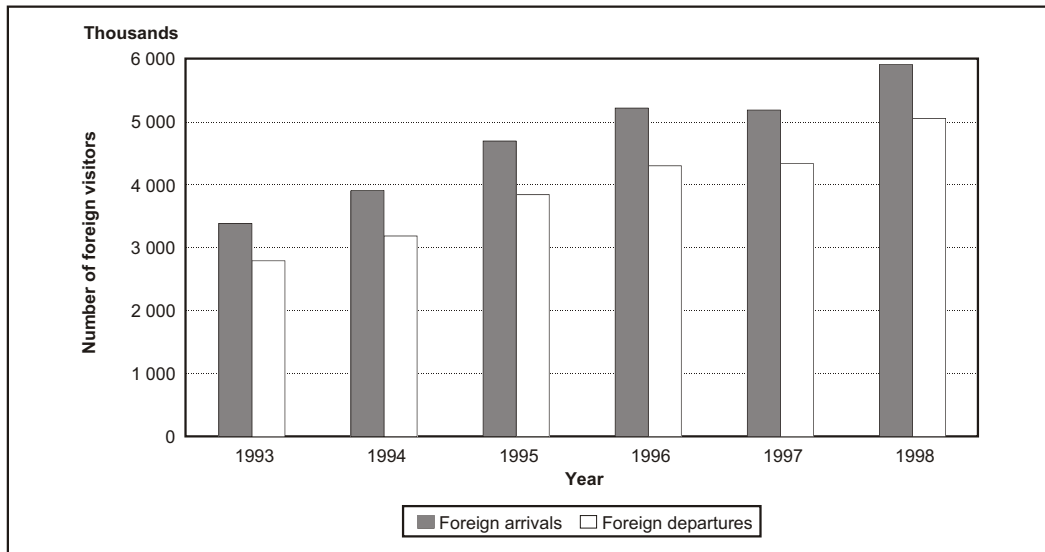
¹ All people entering or leaving South Africa through all legal ports of entry.

Source: Stats SA

² Persons resident outside South Africa, who visit this country temporarily for business, holiday and/or study purposes, as well as for work (more than 90 days).

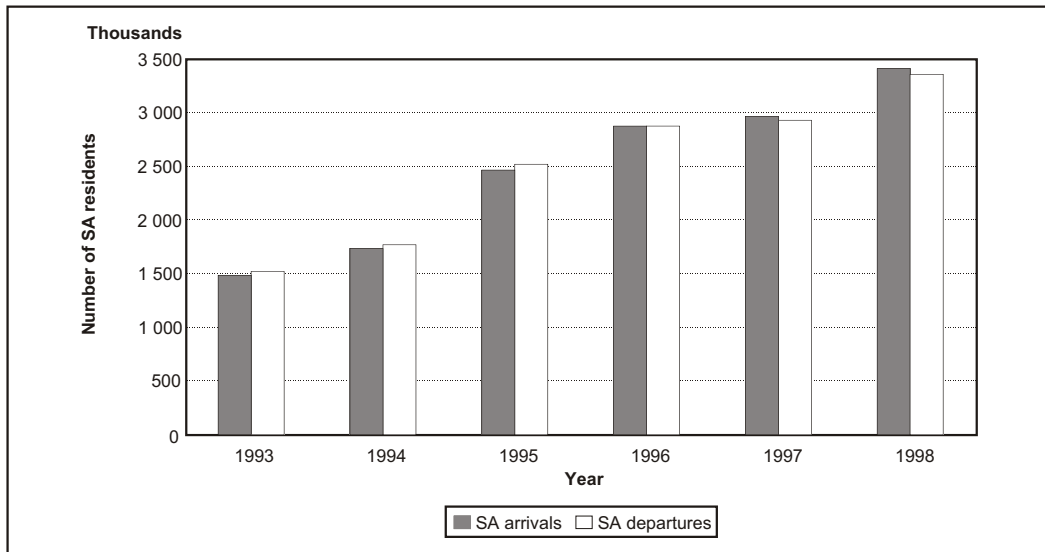
³ South African citizens and persons with permanent residence in South Africa, who leave the country temporarily.

Arrivals and departures of foreign visitors, 1993-1998



There has been an increase in the number of foreign arrivals in the country, from 5 170 000 in 1997 to 5 898 000 in 1998.

Arrivals and departures of South African residents, 1993-1998



4.2 Migration¹

	Immigrants		Emigrants	
	1997	1998	1997	1998
Europe	1 494	1 262	2 962	3 138
Australasia	56	52	2 671	2 513
Middle East	84	66	244	230
Asia	1 034	976	166	169
North America	173	133	1 389	1 338
Central and South America	45	49	43	45
Africa	1 201	948	1 410	1 502
Unspecified	16	8	61	96
Total	4 103	3 494	8 946	9 031

¹ Migration covers two aspects: immigration refers to residents from other countries settling in South Africa, and emigration refers to South Africans settling permanently in another country. These migration figures are obtained from ports of entry into South Africa. They do not reflect undeclared migration.

Source: Stats SA

Housing

5.1 Housing indicators by province, 1998 (Rand value in thousands)

	Eastern Cape	Free State	Gauteng	KwaZulu-Natal	Mpumalanga	Northern Cape	Northern Province	North West	Western Cape	South Africa
Approved formal residential building plans financed by the private sector ¹	623 077	570 642	3 200 887	1 000 328	570 589	1 354 662	457 359	524 245	2 633 404	10 935 193
Expected capital expenditure by the public sector on formal residential buildings	141 704	51 365	358 495	127 787	8 527	50 721	23 478	9 908	228 164	1 000 149
Formal residential buildings completed by the private sector: ¹										
Dwelling-houses	357 792	321 943	1 572 508	479 430	262 610	110 747	208 675	150 802	1 269 788	4 734 295
Flats	9 394	10 902	98 323	36 849	1 673	-	-	6 587	177 536	341 264
Townhouses	38 153	22 733	584 008	225 771	32 165	4 047	15 305	45 574	265 294	1 233 050
Other	18 902	762	142 740	354 933	20 942	950	11 198	-	193 792	744 219
Total	424 241	356 340	2 397 579	1 096 983	317 390	115 744	235 178	202 963	1 906 410	7 052 828

¹ Estimates.

- Nil or not applicable.

Source: Stats SA

5.2 Housing indicators by province, 1998 (numbers)

	Eastern Cape	Free State	Gauteng	KwaZulu-Natal	Mpumalanga	Northern Cape	Northern Province	North West	Western Cape	South Africa
Approved formal residential building plans financed by the private sector ¹	16 732	18 871	31 720	8 712	9 660	2 871	5 353	7 339	21 293	122 551
Formal residential buildings completed by the private sector: ¹										
Dwelling-houses	8 460	13 992	17 240	5 349	5 123	3 480	9 374	6 659	11 682	81 359
Flats (units)	78	111	935	188	15	-	-	161	2 287	3 775
Townhouses (units)	420	184	4 728	1 628	314	31	105	448	1 653	9 511
Other	15	3	10	104	16	4	11	-	63	226
Total	8 973	14 290	22 913	7 269	5 468	3 515	9 490	7 268	15 685	94 871

¹ Estimates.

- Nil or not applicable.

Source: Stats SA

5.3 Distribution of services by population group of head of household, 1996¹

	African	Coloured	Indian	White	Unspecified/Other	Total
Energy source for cooking						
Electricity direct from authority	1 973 996	557 655	237 670	1 437 864	39 503	4 246 688
Electricity from other source	13 687	1 880	274	2 641	136	18 617
Gas	212 989	42 618	2 600	26 723	1 727	286 657
Paraffin	1 886 002	49 117	1 228	1 714	5 800	1 943 862
Wood	1 981 251	80 553	640	3 084	7 692	2 073 219
Coal	314 074	4 046	145	1 623	943	320 830
Animal dung	105 345	351	29	125	219	106 068
Unspecified/Other	46 652	4 987	1 055	8 717	2 218	63 629
Total	6 533 998	741 206	243 639	1 482 492	58 237	9 059 571
Energy source for heating						
Electricity direct from authority	1 811 606	525 983	236 385	1 398 692	37 617	4 010 283
Electricity from other source	13 933	2 012	309	4 107	206	20 567
Gas	74 525	8 769	848	22 894	654	107 689
Paraffin	1 254 009	31 559	975	4 612	3 809	1 294 964
Wood	2 275 112	122 616	1 291	9 941	8 764	2 417 724
Coal	715 856	10 547	546	6 360	2 323	735 632
Animal dung	83 680	409	17	174	166	84 447
Unspecified/Other	305 277	39 311	3 270	35 710	4 698	388 266
Total	6 533 998	741 206	243 639	1 482 492	58 237	9 059 571

¹ Excluding institutions and hostels.

5.3 Distribution of services by population group of head of household, 1996¹

	African	Coloured	Indian	White	Unspecified/Other	Total
Energy source for lighting						
Electricity direct from authority	2 829 808	616 089	239 896	1 459 861	42 990	5 188 644
Electricity from other source	22 677	3 365	225	5 721	193	32 182
Gas	32 342	1 867	141	1 043	118	35 512
Paraffin	1 105 936	32 482	862	1 537	3 196	1 144 014
Candles	2 485 860	83 205	1 369	3 174	9 423	2 583 031
Unspecified/Other	57 375	4 197	1 147	11 155	2 316	76 190
Total	6 533 998	741 206	243 639	1 482 492	58 237	9 059 571
Main water supply						
Piped water in dwelling	1 745 954	532 953	236 805	1 422 557	38 587	3 976 855
Piped water on site or in yard	1 335 644	137 337	2 894	9 467	5 886	1 491 228
Public tap	1 721 853	36 023	924	2 062	5 084	1 765 945
Water-carrier/tanker	106 053	3 949	235	600	367	111 204
Borehole/rain-water tank/well	386 987	13 797	1 386	38 137	1 576	441 884
Dam/river/stream/spring	1 096 334	11 975	493	3 428	4 255	1 116 484
Unspecified/Other	141 173	5 172	903	6 241	2 481	155 970
Total	6 533 998	741 206	243 639	1 482 492	58 237	9 059 571

¹ Excluding institutions and hostels.

5.3 Distribution of services by population group of head of household, 1996¹

	African	Coloured	Indian	White	Unspecified/Other	Total
Toilet facilities						
Flush toilet or chemical toilet	2 212 402	590 484	237 838	1 470 664	41 465	4 552 854
Pit latrine	2 844 863	57 716	4 447	3 869	8 699	2 919 594
Bucket latrine	364 605	52 927	280	638	1 734	420 185
None of the above	1 074 691	37 539	428	1 335	4 139	1 118 132
Unspecified/Other	37 437	2 539	647	5 985	2 199	48 807
Total	6 533 998	741 206	243 639	1 482 492	58 237	9 059 571
Refuse removal						
Removed by local authority at least once a week	2 430 509	595 389	233 415	1 340 728	41 074	4 641 115
Removed by local authority less often	182 987	8 919	888	6 928	754	200 477
Communal refuse dump	241 012	31 334	658	13 023	1 173	287 199
Own refuse dump	2 719 220	80 172	5 404	91 910	8 879	2 905 586
No rubbish disposal	838 801	12 575	1 287	6 855	3 207	862 726
Unspecified/Other	121 470	12 816	1 987	23 046	3 150	162 469
Total	6 533 998	741 206	243 639	1 482 492	58 237	9 059 571

¹ Excluding institutions and hostels.

Source: Census '96

Education

6.1 School pupil enrolment by province, 1998

Eastern Cape	Free State	Gauteng	KwaZulu-Natal	Mpumalanga	Northern Cape	Northern Province	North West	Western Cape	South Africa
2 301 930	810 689	1 424 021	2 725 371	935 528	206 597	1 810 603	953 737	902 879	12 071 355

Source: Department of Education

6.2 Number of schools by province, 1997

Eastern Cape	Free State	Gauteng	KwaZulu-Natal	Mpumalanga	Northern Cape	Northern Province	North West	Western Cape	South Africa
5 442	1 850	1 823	5 573	1 967	516	4 614	2 175	1 873	26 833

Source: Department of Education

6.3 Number of school educators by province, 1998

Eastern Cape	Free State	Gauteng	KwaZulu-Natal	Mpumalanga	Northern Cape	Northern Province	North West	Western Cape	South Africa
68 033	24 078	44 324	74 834	27 804	7 142	57 155	31 962	25 393	360 725

Source: Department of Education

6.4 Number of school pupils according to grade by province, 1998

	Eastern Cape	Free State	Gauteng	KwaZulu-Natal	Mpumalanga	Northern Cape	Northern Province	North West	Western Cape	South Africa
Grade										
0	22 632	13 531	6 426	39 229	18 040	3 929	32 064	2 404	11 152	149 407
1	366 810	79 511	151 418	334 408	95 623	19 697	176 995	89 950	98 398	1 412 810
2	258 257	75 464	139 809	278 416	92 331	21 657	165 379	96 078	89 984	1 217 375
3	236 174	74 363	134 710	267 961	90 338	20 928	161 472	98 143	85 303	1 169 392
4	219 219	73 473	131 251	255 483	88 253	21 060	162 860	101 023	84 884	1 137 506
5	198 342	70 069	121 993	239 532	83 024	19 193	157 545	81 749	80 965	1 052 412
6	178 086	64 238	115 389	229 292	77 351	17 558	144 665	76 348	76 987	979 914
7	165 924	61 739	110 778	213 720	72 939	17 028	135 395	75 862	74 254	927 639
Total Primary	1 645 444	512 388	991 774	1 858 041	617 899	141 050	1 136 375	621 557	601 927	8 046 455
8	168 202	70 504	123 591	230 518	82 513	17 853	167 088	76 259	78 395	1 014 923
9	146 293	67 018	114 737	193 298	70 115	16 018	140 631	69 447	69 369	886 926
10	139 314	65 908	109 018	172 678	65 151	13 267	125 896	72 793	63 640	827 665
11	110 630	51 423	94 387	157 451	55 410	10 168	122 160	60 747	47 756	710 132
12	92 047	43 448	70 514	113 385	44 440	8 241	118 453	52 934	41 792	585 254
Total Secondary	656 486	298 301	512 247	867 330	317 629	65 547	674 228	332 180	300 952	4 024 900
Grand total	2 301 930	810 689	1 424 021	2 725 371	935 528	206 597	1 810 603	953 737	902 879	12 071 355

Source: Department of Education

6.5 Senior Certificate Examination results by province, 1998¹

	Number of candidates	Passes ²	Percentage passes	University exemptions	Percentage exemptions	Failures	Percentage failures
Eastern Cape	82 517	37 206	45	6 533	8	45 311	55
Free State	40 777	17 699	43	4 338	11	23 078	57
Gauteng	76 861	42 700	56	12 498	16	34 076	44
KwaZulu-Natal	108 063	54 324	50	17 998	17	53 739	50
Mpumalanga ³	41 649	21 901	53	5 189	13	19 748	48
Northern Cape	7 429	4 858	65	806	11	2 571	35
Northern Province	114 621	40 218	35	7 780	7	74 115	65
North West	42 436	23 158	55	5 691	13	19 231	45
Western Cape	38 546	30 438	79	9 028	23	8 108	21
South Africa	552 899	272 502	49	69 861	13	279 977	51

¹ Results as at 20 April 1999. First time and repeating candidates combined.

² Excluding the number of candidates awaiting results.

³ Revised results.

Source: Department of Education

6.6 Headcount of enrolled students according to tertiary institution and gender by province, 1998¹

	Universities				Technikons			
	Number of institutions	Number of students			Number of institutions	Number of students		
		Males	Females	Total		Males	Females	Total
Eastern Cape	4	9 068	12 555	21 623	3	7 742	7 984	15 726
Free State	1	4 737	5 050	9 787	1	3 258	2 889	6 147
Gauteng	6	93 423	116 491	209 914	5	73 808	52 282	126 090
KwaZulu-Natal	3	14 316	16 368	30 684	3	13 249	12 154	25 403
Mpumalanga								
Northern Cape								
Northern Province	2	8 098	9 835	17 933				
North West	2	8 751	11 635	20 386	1	1 304	2 606	3 910
Western Cape	3	21 738	20 674	42 412	2	9 678	8 240	17 918
Total	21	160 131	192 608	352 739	15	109 039	86 155	195 194

¹ The provinces with no numbers do not contain universities or technikons.

Source: Department of Education

6.7 Budgeted expenditure on education by national and provincial governments

	1993/94	1994/95	1995/96	1996/97	1997/98	1998/99
Amount (R millions)	27 761	30 850	34 594	39 166	42 881	46 347
Percentage of total budget expenditure	21,1	22,0	21,9	22,1	21,7	22,4

Source: Budget Review, 1999

The proportion of budgeted expenditure in South Africa and in each province on education has remained more or less constant over time.

Health and welfare

7.1 Disabled persons by type of disability, gender and population group, 1996¹

	African	Coloured	Indian	White	Unspecified/Other	Total
Sight						
Male	397 449	15 308	7 239	16 347	2 142	438 484
Female	605 396	19 254	8 384	16 620	2 884	652 539
Total	1 002 845	34 561	15 623	32 967	5 026	1 091 022
Hearing						
Male	154 538	7 716	2 601	14 906	1 091	180 851
Female	177 708	7 841	2 348	13 380	1 280	202 556
Total	332 246	15 557	4 948	28 286	2 370	383 408
Physical						
Male	223 680	19 032	5 653	13 821	1 638	263 824
Female	263 337	13 674	4 111	11 291	1 537	293 950
Total	487 017	32 706	9 764	25 112	3 175	557 774
Mental						
Male	95 550	8 471	2 391	6 162	842	113 416
Female	66 054	5 877	1 659	4 960	587	79 137
Total	161 604	14 349	4 050	11 122	1 429	192 553
More than one disability						
Male	53 031	2 880	1 498	5 873	413	63 694
Female	79 739	3 196	1 445	5 653	509	90 542
Total	132 771	6 076	2 943	11 525	922	154 236

¹ Excluding institutions.

7.1 Disabled persons by type of disability, gender and population group, 1996¹

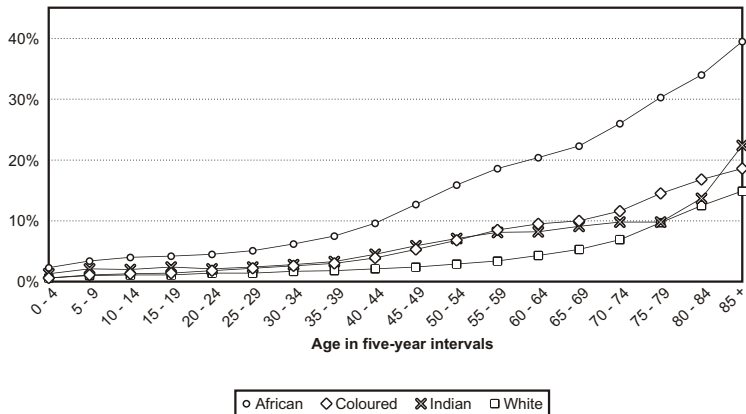
	African	Coloured	Indian	White	Unspecified/Other	Total
Unspecified						
Male	99 081	12 273	2 680	18 277	1 770	134 081
Female	109 250	12 445	2 821	18 259	1 864	144 639
Total	208 331	24 718	5 502	36 536	3 634	278 720
South Africa						
Male	1 023 329	65 680	22 061	75 385	7 894	1 194 350
Female	1 301 484	62 287	20 769	70 163	8 661	1 463 364
Total	2 324 813	127 967	42 830	145 548	16 555	2 657 714

¹ Excluding institutions.

Source: Census '96

Sight disability is the most prevalent type of disability.

7.2 Percentage of disabled in each age category by population group



Excluding institutions and those for whom age was not specified

7.3 HIV prevalence by province – Antenatal survey findings

	Est. (HIV+) 95% CI ¹ ,1997		Est. (HIV+) 95% CI ¹ ,1998	
	%	CI	%	CI
Eastern Cape	12,6	(11,0 - 14,4)	15,9	(11,8 - 20,0)
Free State	20,0	(17,1 - 22,2)	22,8	(20,2 - 25,3)
Gauteng	17,1	(15,1 - 19,2)	22,5	(19,2 - 25,7)
KwaZulu-Natal	26,9	(24,9 - 29,0)	32,5	(29,3 - 35,7)
Mpumalanga	22,6	(20,5 - 24,8)	30,0	(24,3 - 35,8)
Northern Cape	8,6	(6,4 - 11,3)	9,9	(6,4 - 13,4)
Northern Province	8,2	(6,9 - 9,7)	11,5	(9,2 - 13,7)
North West	18,1	(16,2 - 20,1)	21,3	(19,1 - 23,4)
Western Cape	6,3	(5,2 - 7,5)	5,2	(3,2 - 7,2)
South Africa	17,04		22,8	

¹ The true value is estimated to fall within the two confidence limits, thus the confidence interval (CI) is important to refer to when interpreting data.

Source: Department of Health

While the wide confidence limits indicate that these statistics should be treated with caution, this is nevertheless the first official indication of the extent of the HIV/Aids epidemic in the country.

7.4 HIV prevalence by age – Antenatal survey findings

	Est. (HIV+) 95% CI, 1997		Est. (HIV+) 95% CI, 1998	
	%	CI	%	CI
Age group				
<20	12,7	(11,3 - 14,2)	21,0	(18,4 - 23,8)
20-24	19,7	(18,4 - 21,0)	26,1	(24,1 - 28,1)
25-29	18,2	(16,8 - 19,6)	26,9	(24,7 - 29,0)
30-34	14,5	(12,9 - 16,2)	19,1	(17,1 - 21,1)
35-39	9,5	(7,7 - 11,5)	13,4	(11,2 - 15,6)
40-44 ¹	7,5	(4,4 - 11,8)	10,5	(6,8 - 14,1)
45-49 ¹	8,8	(1,9 - 23,7)	10,2	(0,4 - 20,0)

¹ Note that the wide confidence intervals (CI) are a result of the smaller numbers of women who participated in the study.

Source: Department of Health

These figures should be treated with caution, since the confidence intervals are rather wide, particularly in the two oldest age categories.

7.5 Termination of pregnancy by province, 1997/98

Eastern Cape	Free State	Gauteng	KwaZulu-Natal	Mpumalanga	Northern Cape	Northern Province	North West	Western Cape	South Africa
2 844	2 816	14 998	1 283	1 666	492	533	230	4 116	28 978

Source: Department of Health, Epidemiological Comments Volume 24, Number 3

Official termination of pregnancy totalled 28 978; of this figure a gestational age of more than 12 weeks was recorded in 9 935 cases. Patients under the age of 18 years numbered 2 904 of the total figure.

7.6 Registered health-care practitioners, 1998

	1996	1997	1998
Medical interns	122	1 189	1 791
Medical practitioners	28 381	29 020	29 369
Nurses	173 742	175 599	174 754
Dentists	4 235	4 298	4 387
Pharmacists	9 788	9 947	9 948
Ambulance emergency assistants	2 536	2 860	2 790
Environmental health officers	2 592	2 609	2 401
Medical technologists	4 329	4 364	4 165
Occupational therapists	2 084	2 210	2 197
Optometrists	1 653	1 768	1 830
Physiotherapists	3 731	3 884	3 940
Psychologists	4 050	4 212	4 341
Radiographers	3 991	4 155	4 035
Speech therapists and audiologists	1 133	1 185	1 213

Sources: Health Professions Council of South Africa,
SA Nursing Council and SA Pharmacy Council

The number of doctors has increased since 1996, whereas the number of nurses and pharmacists has remained almost constant.

7.7 Hospitals and hospital beds by province, 1998

	Eastern Cape	Free State	Gauteng	KwaZulu-Natal	Mpumalanga	Northern Cape	Northern Province	North West	Western Cape	South Africa
Hospitals:										
Public	66	31	29	66	25	19	47	32	45	360
Private and aided	42	18	108	48	11	29	2	17	69	344
Total (all hospitals)	108	49	137	114	36	48	49	49	114	704
Beds:										
Public hospitals	17 342	6 533	18 230	24 514	4 427	2 006	13 075	9 080	12 427	107 634
Private and aided hospitals	3 196	2 408	14 622	7 159	1 079	960	267	932	6 106	36 729
Total (all beds)	20 538	8 941	32 852	31 673	5 506	2 966	13 342	10 012	18 533	144 363

Source: Hospital and Nursing Yearbook, 1998

A further 124 hospitals/institutions with 20 339 beds are operational: 36 institutions licensed under the Mental Disorders Act (9 220 beds); six oral and dental hospitals (36 beds); 60 mining clinics and hospitals (6 065 beds) and 22 tuberculosis hospitals (5 018 beds).

7.8 Number of new/upgraded clinics by province, 1997

	Eastern Cape	Free State	Gauteng	KwaZulu-Natal	Mpumalanga	Northern Cape ¹	Northern Province	North West	Western Cape	South Africa
New clinics completed	15	7	6	92	4		50	20	10	204
Residential additions to clinics	35			215	1		101	13		365
Upgrading of existing clinics		13	1	4			12	7	1	38
Mobile clinics					49				4	53

¹ During the report year Northern Cape did not put any resources into the erection/upgrading of clinics.

Source: Department of Health

An active clinic-building programme took place in South Africa in 1997.

7.9 Budgeted expenditure on health and welfare by central and provincial governments (R millions)

	1993/94	% ¹	1994/95	% ¹	1995/96	% ¹	1996/97	% ¹	1997/98	% ¹	1998/99	% ¹
Health	13 969	10,6	14 299	10,2	16 070	10,2	18 464	10,4	21 336	10,8	23 220	11,2
Social security and welfare	10 794	8,2	13 015	9,3	15 163	9,6	16 426	9,3	18 093	9,1	19 262	9,3

¹ Percentage of total budget expenditure.

Source: Budget Review, 1999

Labour

8.1 Employment and unemployment indicators by province, 1996 (aged 15-65 years)

	Eastern Cape	Free State	Gauteng	KwaZulu-Natal	Mpumalanga	Northern Cape	Northern Province	North West	Western Cape	South Africa
Number of people aged 15-65 years (1 000)	3 366	1 633	4 999	4 872	1 621	496	2 496	1 995	2 508	23 986
Economically active ¹ (1 000)	1 529	1 001	3 572	2 580	903	302	1 057	1 169	1 673	13 785
Economically active population as percentage of the population	24,3	38,0	48,6	30,6	32,2	35,9	21,4	34,8	42,3	34,0
Labour force participation rate of the economically active population										
Male	50,7	55,9	56,3	53,6	57,2	57,0	49,7	56,1	55,1	54,6
Female	49,3	44,1	43,7	46,4	42,8	43,0	50,3	43,9	44,9	45,4
Overall labour force rate	100,0	100,0	100,0	100,0	100,0	100,0	100,0	100,0	100,0	100,0
Unemployment rate (expanded definition) according to the 1996 population census ^{2, 3}										
Male	44,7	21,2	21,9	36,6	23,4	21,6	36,1	28,1	15,1	27,1
Female	52,5	41,1	36,4	45,5	45,7	37,8	56,0	50,5	21,3	42,0
Overall unemployment rate	48,5	30,0	28,2	39,1	32,9	28,5	46,0	37,9	17,9	33,9
Total population (1 000)	6 303	2 634	7 348	8 417	2 801	840	4 929	3 355	3 957	40 584

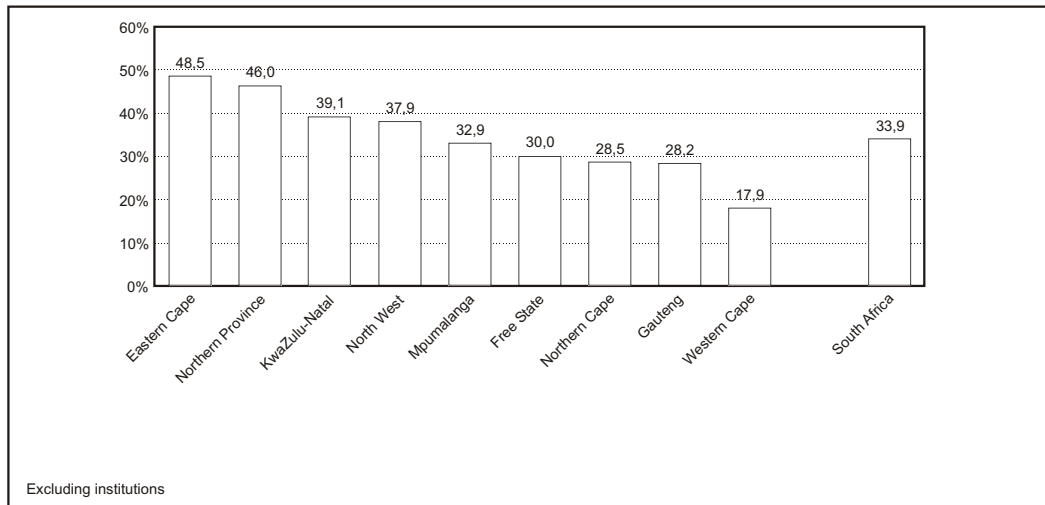
¹ The *economically active* population consists of those between 15 and 65 years, who are employed or unemployed.

Source: Census '96

² The *unemployed* (expanded definition) are those between 15 and 65 years, who did not work at the time of the census, but were looking for work.

³ Including 'Unspecified/Other'.

8.2 Unemployment rates by province amongst those aged 15-65 years, 1996¹ (expanded definition)



¹ The *unemployed* are those between 15 and 65 years, who did not work at the time of the census, but were looking for work.

The unemployment rate (expanded definition) at the time of the 1996 population census was 34%. Four provinces – Eastern Cape (49%), Northern Province (46%), KwaZulu-Natal (39%) and North West (38%) – had higher unemployment rates than the country as a whole.

8.3 Employment in the formal business sector¹ (numbers)

	1970	1980	1990	1998	1970-1998 ²
Agriculture ³	1 638 761	1 241 497	1 208 370
Mining	655 346	769 000	758 000	421 006	-1,6%
Manufacturing	1 068 921	1 460 000	1 517 000	1 341 691	0,8%
Electricity, gas and water	..	46 455	52 075	38 519	..
Construction	317 814	370 698	424 134	282 089	-0,04%
Wholesale and retail trade, motor trade and hotels	620 268	764 443	799 232	803 414	0,9%
Transport, storage and communication - government institutions	277 033	348 707	269 248	188 146	-1,4%
Public road transport of passengers and goods (non-governmental institutions)	..	81 402	93 340	61 117	..
Banking institutions, building societies and insurance companies	..	123 776	189 420	218 286	..
National departments and provinces ⁴	458 188	620 375	816 752	1 223 369	3,6%
Local authorities ⁴	191 294	332 189	460 986	243 775	0,9%
Other governmental institutions	..	59 645	78 470	103 082	..
Laundries and dry-cleaning services	..	14 744	13 440	10 736	..

¹ For comparability purposes the 1980 and 1990 figures include estimates for the former TBVC states.

Source: Stats SA

² Average annual growth rate.

³ 1970 as at 31 August 1971, 1980 as at 31 August 1979, and 1990 as at 28 February 1990.

⁴ Workers in the civil services of the former self-governing territories are included with workers from the national departments and provinces as from June 1994. In the 1995 and prior editions, these workers were shown together with the figure for local authorities.

.. Data not available.

8.4 Unemployed persons amongst those aged 15-65 years, 1996¹ (expanded definition)

	Eastern Cape	Free State	Gauteng	KwaZulu-Natal	Mpumalanga	Northern Cape	Northern Province	North West	Western Cape	South Africa
African										
Male	318 815	110 873	398 782	426 155	117 038	15 143	186 709	179 001	58 053	1 810 570
Female	365 236	172 947	528 584	513 402	172 004	21 409	294 836	253 059	73 944	2 395 421
Total	684 051	283 820	927 367	939 557	289 042	36 552	481 545	432 061	131 997	4 205 992
Coloured										
Male	22 731	4 202	15 109	6 081	954	20 559	321	2 542	69 055	141 555
Female	25 695	5 409	15 329	4 896	1 168	25 976	400	2 956	75 847	157 676
Total	48 427	9 611	30 439	10 977	2 121	46 535	721	5 498	144 902	299 231
Indian										
Male	529	35	3 850	23 467	192	64	74	145	956	29 312
Female	402	43	2 689	16 732	180	81	74	137	729	21 068
Total	931	78	6 539	40 200	372	145	147	282	1 685	50 379
White										
Male	3 353	2 873	20 212	6 077	2 061	833	956	2 023	7 549	45 938
Female	2 950	2 762	18 031	5 968	2 570	957	1 074	2 165	6 651	43 127
Total	6 304	5 635	38 243	12 045	4 631	1 790	2 030	4 188	14 200	89 066
Unspecified										
Male	1 287	333	2 485	2 757	484	463	868	652	3 213	12 543
Female	1 428	470	2 694	3 408	640	574	1 242	864	3 117	14 437
Total	2 715	803	5 179	6 165	1 124	1 037	2 110	1 516	6 330	26 980
Total unemployed										
Male	346 716	118 316	440 439	464 538	120 728	37 063	188 928	184 363	138 826	2 039 917
Female	395 711	181 631	567 328	544 405	176 562	48 996	297 626	259 183	160 287	2 631 730
Total	742 427	299 948	1 007 766	1 008 944	297 290	86 060	486 554	443 546	299 114	4 671 647

¹ The *unemployed* are those between 15 and 65 years, who did not work at the time of the census, but were looking for work.

Source: Census '96

Agriculture

9.1 Agriculture statistics according to principal items, 1996¹

	Eastern Cape	Free State	Gauteng	KwaZulu-Natal	Mpumalanga	Northern Cape	Northern Province	North West	Western Cape	South Africa
Number of commercial farming units	6 338	11 272	2 342	5 037	4 675	6 730	7 273	7 512	9 759	60 938
Total number of workers	63 083	118 866	39 295	115 496	101 051	58 198	121 757	98 349	198 378	914 473
Total gross farming income (R millions)	1 957,2	4 302,0	2 283,3	4 490,3	3 972,8	1 418,9	3 934,5	3 038,3	7 533,6	32 931,2
Total farming debt (R millions)	1 438,9	3 556,0	725,3	2 292,5	1 946,8	1 181,6	2 197,3	1 933,5	3 588,8	18 861,0

¹ The former Transkei, Bophuthatswana, Venda and Ciskei, and the former self-governing territories, are excluded.

Source: Stats SA

9.2 Transfers of rural immovable property¹

	1970 ²	1980 ²	1990 ²	1997	1998	1970-1998 ³
Number of transfers	13 631	10 406	10 146	9 930	9 750	-1,2%
Area (1 000 ha)	3 921	3 924	4 159	5 131	5 474	+1,2%
Value (R millions)	314	572	2 556	4 477	4 313	+9,8%
Average value (R/ha)	80	146	614	873	788	+8,5%

¹ Year ended 31 March.

² The former Transkei, Bophuthatswana, Venda and Ciskei, and the former self-governing territories, are excluded.

³ Compound growth rate.

Source: Registrar of Deeds

9.3 Agricultural products - Tonnage and gross value

	1990		1997		1998	
	Production 1 000 t	Gross value R million	Production 1 000 t	Gross value R million	Production 1 000 t	Gross value R million
Field crop products	38 277	7 370	42 103	13 876	39 558	8 434
Maize	9 180	2 815	10 136	6 001	7 693	4 374
Wheat	1 709	942	2 429	2 161	1 788	1 410
Sugar cane	18 083	1 205	22 155	2 425	22 930	2 650
All other field crop products	9 305	2 408	7 383	3 289	7 147	4 157
Horticultural products	6 770	4 511	8 081	9 590	7 893	11 328
Viticulture	1 061	594	1 120	1 463	1 041	1 413
Citrus fruit	992	539	1 345	1 200	1 418	1 849
Subtropical fruit	528	297	482	492	523	641
Deciduous and other fruit	1 035	1 164	1 426	2 385	1 231	2 968
Vegetables	1 826	930	2 058	1 942	2 071	2 155
Potatoes	1 261	565	1 579	1 276	1 552	1 467
All other horticultural products	67	422	71	832	57	835
Animal products	5 212	9 211	5 256	18 405	5 709	19 552
Cattle and calves slaughtered	644	2 394	485	3 153	524	3 201
Sheep and goats slaughtered	183	817	100	980	101	952
Pigs slaughtered	130	355	120	786	124	749
Fowls slaughtered	622	2 152	922	6 572	1 067	7 987
Fresh milk	2 705	995	2 842	2 429	2 988	2 298
Wool	106	660	57	613	53	428
All other animal products	822	1 838	730	3 872	852	3 937
Total	50 259	21 092	55 440	41 871	53 160	39 314

Source: National Department of Agriculture

Mining

10.1 Mining production

	1970	1980	1990	1997	1998	1970-1998 ¹
Value of minerals sold (R millions)						
Gold	830	10 395	18 994	25 077	24 155	12,8%
Iron ore	29	296	1 079	2 088	2 492	17,2%
Copper	139	329	1 127	1 637	1 612	9,1%
Manganese ore	27	146	849	892	955	13,6%
Coal	110	1 497	8 181	16 546	17 878	19,9%
Building materials (e.g. granite, lime and limestone)	47	286	1 235	2 229	2 267	14,8%
Other	381	2 554	10 086	17 845	21 886	15,6%
Total	1 563	15 503	41 551	66 314	71 245	14,6%
Index of physical volume of production 1995 = 100						
Gold	144,3	130,5	115,5	94,5	90,0	-1,7%
Coal	41,5	56,9	86,0	105,9	106,8	3,4%
Total, including gold	117,5	99,8	99,9	100,4	99,1	-0,6%
Total, excluding gold	45,8	78,3	89,7	104,7	105,7	3,0%

¹ Average annual growth rate.

Source: Minerals Bureau, Department of Minerals and Energy

10.2 Mining statistics

	1991	1992	1993	1994	1995	1996	1997	1998
Number of operating mines	1 122	1 018	905	842	836	788	705	703
Number of paid workers	721 000	663 354	618 691	606 321	597 199	569 796	552 824	466 144
Gross salaries and wages (R millions)	12 622	12 658	12 820	13 535	15 341	16 812	18 613	19 190
Total sales (R millions)	43 328	42 211	46 878	50 712	55 010	63 105	66 314	71 048

Source: Minerals Bureau, Department of Minerals and Energy

There has been a decrease in the number of paid workers in the formal mining sector since 1991.

Manufacturing

11.1 Selected major groups

	1970	1980	1990	1997	1998	1970-1998 ¹
Sales (R millions)						
Food and food products	1 179	6 228	26 589	54 392	57 389	14,9%
Coke and refined petroleum products	334	2 246	10 395	20 393	19 989	15,7%
Basic chemicals	331	2 368	8 873	16 925	16 065	14,9%
Other chemical products	321	1 941	10 383	21 359	23 851	16,6%
Basic iron and steel products	494	3 767	13 362	24 585	25 413	15,1%
Fabricated metal products	659	3 544	12 766	22 220	21 836	13,3%
General and special purpose machinery	481	2 669	12 015	19 682	19 078	14,0%
Motor vehicles, trailers, parts and accessories	510	2 971	15 472	33 835	33 603	16,1%
Total manufacturing	7 548	42 340	188 247	360 409	366 739	14,9%
Index of physical volume of production 1995=100						
Food and food products	49,9	78,9	91,3	106,2	108,3	2,8%
Coke and refined petroleum products	29,0	46,7	77,6	105,3	105,9	4,7%
Basic chemicals	55,8	105,7	110,6	108,1	114,2	2,6%
Other chemical products	31,3	66,1	92,0	107,7	103,9	4,4%
Basic iron and steel products	61,4	113,2	103,6	101,0	96,9	1,6%
Fabricated metal products	108,9	160,7	116,0	109,9	105,4	-0,1%
Total machinery and equipment	83,1	101,6	107,7	110,3	103,6	0,8%
Motor vehicles, trailers, parts and accessories	42,8	89,0	89,4	93,6	86,1	2,5%
Total manufacturing	51,0	87,2	97,6	103,9	101,2	2,5%

¹ Annual average growth rate.

Source: Stats SA

11.2 Manufacturing statistics

	1991	1992	1993	1994	1995	1996	1997	1998
Number of establishments	23 539	..	22 357	25 836
Total employment ¹	1 430 818	1 394 419	1 405 552	1 399 513	1 417 398	1 456 367	1 395 636	1 333 707
Salaries and wages (R millions) ¹	31 990	35 807	41 280	45 692	50 657	55 674	58 203	64 872
Total sales (R millions)	204 246	214 850	232 280	258 807	307 818	337 883	367 192	372 449

¹ Information as derived from the quarterly survey of total employment and earnings.

Source: Stats SA

.. Not available

Formal employment in the manufacturing sector has shown a gradual decrease over time.

Energy

12.1 Electricity (GWh)

	1970	1980	1990	1998	1970-1998 ¹
Electricity consumed	46 647	101 296	151 444	187 514	5,1%

¹ Average annual growth rate.

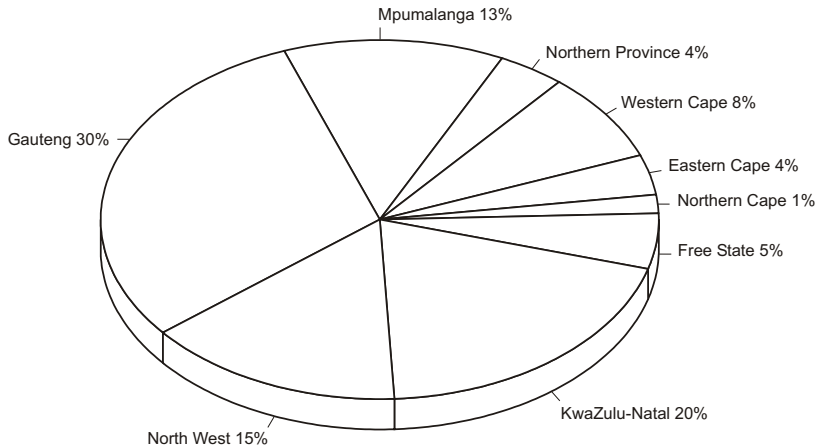
Source: Stats SA

12.2 Electricity consumed by province (GWh)

	Eastern Cape	Free State	Gauteng	KwaZulu-Natal	Mpumalanga	Northern Cape	Northern Province	North West	Western Cape	South Africa
1994	5 451	11 759	49 231	26 618	23 552	4 074	7 378	22 356	14 890	165 310
1995	5 590	11 439	52 490	29 295	25 685	3 734	7 559	21 710	12 602	170 103
1996	6 027	10 803	54 150	35 235	24 619	3 613	7 315	21 654	15 520	178 938
1997	6 818	9 109	56 544	37 342	24 198	3 034	7 234	27 918	15 304	187 501
1998	6 818	9 110	56 548	37 344	24 200	3 034	7 234	27 920	15 305	187 514

Source of provincial allocation: Eskom

Electricity consumed by province (GWh), 1998



Gauteng, as the most urbanised province, consumes the largest proportion of electricity (30%).

Construction

13. Construction (R millions)

	1970	1980	1990	1998 ¹	1970-1998 ²
Value of work done	1 146	4 026	21 455	32 336	12,7%
Value of buildings completed by private sector:					
Residential buildings	276	771	3 612	7 053	12,3%
Non-residential buildings	105	275	1 946	3 779	13,7%
Additions and alterations	76	284	1 684	2 402	13,1%
Total	457	1 330	7 242	13 234	12,8%

¹ Preliminary.

² Annual average growth rate.

Source: Stats SA

Internal trade

14. Internal trade (R millions)

	1980 ¹	1990	1997	1998	1980-1998 ¹
Wholesale trade sales					
Sales at current prices	29 792	113 990	243 720	250 774	14,8%
Sales at constant June 1995 prices	146 680	179 266	204 373	204 945	2,8%
Retail trade sales					
Sales at current prices	15 768	73 301	144 693	151 954	14,3%
Sales at constant 1995 prices	63 795	73 301	127 110	126 999	7,1%
Motor trade sales					
Trading income	6 651	32 909	74 167	71 896	14,6%
Hotels					
Trading income	522 ²	2 246 ²	4 780	5 143	12,3%

¹ Average annual growth rate.

² Revised since previous edition.

Source: Stats SA

Transport

15.1 Passenger journeys by train¹ (thousands)

	1988	1990	1992	1993	1994	1995	1996
Long-distance passengers	8 121	4 671	2 843	2 850	1 788	1 711	..
Suburban passengers	569 787	547 593	468 326	398 419	403 530	413 515	442 739
Total	577 908	552 264	471 169	401 269	405 318	415 226	442 739

¹ Year ending 31 March.

.. Not available.

Source: Department of Transport

15.2 Railway lines in South Africa¹ (kilometres)

	1985	1990	1992	1993	1994	1995	1996
Route distance	23 821	21 163	20 778	20 934	21 303	20 319	20 319
Route distance electrified	7 913	9 090	9 088	8 976	9 087	9 078	16 946

¹ Year ending 31 March.

Source: Department of Transport

15.3 Transport of goods¹ (thousand metric tons)

	1980	1994	1996	1997	1998	1980-1998 ²
Road and rail						
Private undertakings	372 210	398 877	407 905	432 787	449 980	1,1%
Transnet	181 632	172 851	177 630	188 010	187 318	0,2%

¹ Year ending 31 March.

² Average annual growth rate.

Source: Stats SA

15.4 Road traffic collisions (numbers)

	1989	1990	1991	1992	1993	1994	1995	1996	1997
Collisions									
Fatal	9 061	9 174	9 222	8 378	7 936	8 140	8 335	7 850	7 790
Major	20 816	20 446	21 711	20 205	20 445	22 594	23 988	22 707	23 059
Minor	59 383	59 393	60 495	55 221	56 291	60 199	61 716	54 190	57 391
No injury	345 675	344 274	353 113	345 681	349 357	377 064	406 194	436 027	417 748
Total	434 935	433 287	444 541	429 485	434 029	467 997	500 233	520 774	505 988
Casualties									
Killed	10 877	11 157	11 069	10 142	9 470	9 981	10 256	9 848	9 691
Seriously injured	32 230	32 343	34 765	32 792	33 555	36 548	39 780	38 473	39 302
Slightly injured	84 281	87 273	90 612	83 470	85 130	91 887	96 689	86 728	91 760
Total	127 388	130 773	136 446	126 404	128 155	138 416	146 725	135 049	140 753
All road vehicles involved									
Motor cars	519 909	497 062	505 343	480 111	479 691	518 510	551 782	574 153	544 862
Minibuses	51 024	57 305	61 006	60 512	60 102	63 174	67 629	69 555	69 875
Light delivery vehicles	92 359	99 994	104 496	102 468	105 728	117 115	129 422	137 650	139 018
Motor cycles	13 758	12 234	11 321	10 618	10 307	9 736	9 838	9 195	8 876
All other road vehicles	65 456	64 699	67 058	65 788	69 516	76 872	84 516	91 252	94 613
Total	742 506	731 294	749 224	719 497	725 344	785 407	843 187	881 805	857 244

Source: Stats SA

Communication

16.1 Households owning radios (percentages)

	African	Coloured	Indian	White
1997	87,2	86,5	93,3	98,1
1998	86,4	84,7	96,9	97,1

Source: SABC, Broadcast Research Department

16.2 Households owning TV sets (percentages)

	African	Coloured	Indian	White
1997	49,2	81,3	97,1	94,5
1998	50,3	81,5	96,1	95,2

Source: SABC, Broadcast Research Department

16.3 Telephone facilities by population group of head of household, 1996¹

	African	Coloured	Indian	White	Unspecified/Other	Total
Telephone in dwelling/cellular phone	740 783	321 849	187 433	1 312 267	28 917	2 591 249
Telephone at a neighbour nearby	342 015	109 544	21 792	18 851	3 460	495 662
A public telephone nearby	2 916 226	194 306	24 753	96 622	13 526	3 245 433
At another location nearby, e.g. work	390 616	57 987	4 398	31 434	2 303	486 736
At another location not nearby	511 573	12 128	1 194	3 142	1 748	529 785
No access to a telephone	1 592 049	42 220	3 269	12 211	5 993	1 655 743
Not stated	40 736	3 171	801	7 965	2 290	54 963
Total	6 533 998	741 206	243 639	1 482 492	58 237	9 059 571

¹ Excluding institutions and hostels.

Source: Census '96

National accounts

17.1 Gross domestic product at constant prices

	1993	1994	1995	1996	1997	1998	1993-1998 ¹
Gross domestic product (at market prices) at 1995 prices (R millions)	514 886	531 538	548 100	570 856	585 149	588 344	2,7
Percentage change relative to previous year		3,2	3,1	4,2	2,5	0,5	2,7

¹ Average annual growth rate.

Source: Stats SA

17.2 Gross domestic product by industry at current prices (R millions)

	1993	1994	1995	1996	1997	1998	1993-1998 ¹
Agriculture, forestry and fishing	16 284	20 252	19 317	23 721	25 484	26 620	10,3%
Mining and quarrying	30 052	32 111	34 830	38 768	40 155	44 462	8,1%
Manufacturing	82 642	92 068	106 180	114 128	123 864	127 461	9,1%
Electricity and water	13 930	15 975	17 408	18 128	20 339	21 123	8,7%
Construction	12 318	13 797	15 774	17 631	19 265	20 741	11,0%
Wholesale, retail and motor trade; catering and accommodation services	56 468	62 474	71 768	79 463	85 934	89 342	9,6%
Transport and communication	33 972	38 297	44 538	51 787	57 558	63 489	13,3%
Finance, real estate and business services	62 861	70 491	82 162	94 116	109 609	124 1200	14,6%
Community, social and other personal services	9 435	11 349	13 690	15 368	17 374	19 394	15,5%
General government services	62 375	71 279	80 832	93 722	104 502	116 522	13,4%
Other producers (non-profit institutions and domestic workers)	10 505	12 054	13 855	15 671	17 803	19 879	13,6%
All industries at basic prices	390 841	440 145	500 354	562 505	621 887	673 153	11,5%
Taxes on products	41 611	48 374	53 644	58 184	63 633	69 713	10,9%
Less: Subsidies on products	6 321	6 400	5 898	5 746	5 307	5 053	-4,4%
GDP at market prices	426 132	482 119	548 100	614 943	680 213	737 813	11,6%

¹ Average annual growth rate.

Source: Stats SA

² Net amount after deduction of imputed financial services.

17.3 Expenditure on gross domestic product at current market prices (R millions)

	1993	1994	1995	1996	1997	1998	1993-1998 ¹
Final consumption expenditure by households	265 392	299 541	343 037	385 280	431 072	464 760	11,9%
Final consumption expenditure by general government	85 551	96 503	100 424	119 457	134 906	148 694	11,7%
Gross fixed capital formation	62 603	73 047	87 042	99 381	111 273	122 060	14,3%
Change in inventories	2 603	8 013	11 517	5 603	-1 456	-6 432	-19,8%
Residual item	-5 677	-6 081	1 304	-3 234	-3 179	-396	n/a
Gross domestic expenditure	410 472	471 023	543 324	606 487	672 616	728 686	12,2%
Exports of goods and services	91 578	106 844	125 867	151 795	168 415	190 086	15,7%
Less: Imports of goods and services	75 917	95 747	121 091	143 340	160 819	180 959	19,0%
Expenditure on gross domestic product	426 133	482 120	548 100	614 942	680 212	737 813	11,6%

¹ Average annual growth rate.

Source: South African Reserve Bank

17.4 Balance of payments (R millions)

	1993	1994	1995	1996	1997	1998
Balance on current account	4 867	336	- 7 989	- 8 128	- 10 426	- 11 630
Capital movements (long and short term)	123	2 818	3 596	- 1 864	19 208	6 677

Source: South African Reserve Bank

Government finances

18. Budgetary expenditure by national and provincial governments (R millions)

	1993/94	1994/95	1995/96	1996/97	1997/98	1998/99
Protection services	23 076	25 385	25 098	28 125	31 188	34 276
Social and welfare services:						
Education	27 761	30 850	34 594	39 166	42 881	46 347
Health	13 969	14 299	16 070	18 464	21 336	23 220
Welfare	10 793	13 015	15 163	16 426	19 278	19 261
Other social and welfare services	5 460	4 928	8 057	7 312	10 118	9 986
Economic services	18 259	16 367	17 471	19 509	20 528	19 333
Unallocable: interest	22 150	24 575	29 493	34 628	38 563	43 813
Unallocable: other	9 942	10 918	12 122	13 925	14 527	10 760
Total	131 410	140 337	158 068	177 555	198 419	206 996

Source: Department of Finance

Prices

19.1 Prices

	1970	1980	1990	1996	1997	1998	1970 - 1998 ¹
Production price index (June 1995=100) ²	5,3	18,1	65,4	106,6	114,2	118,2	
Percentage change compared with the previous year ³	3,2	16,0	12,0	6,9	7,1	3,5	11,7
Consumer price index (1995=100) ⁴	5,4	14,9	58,6	107,4	116,6	124,6	
Percentage change compared with the previous year (inflation rate) ³	5,1	13,8	14,4	7,4	8,6	6,9	11,9

¹ Average annual growth rate.

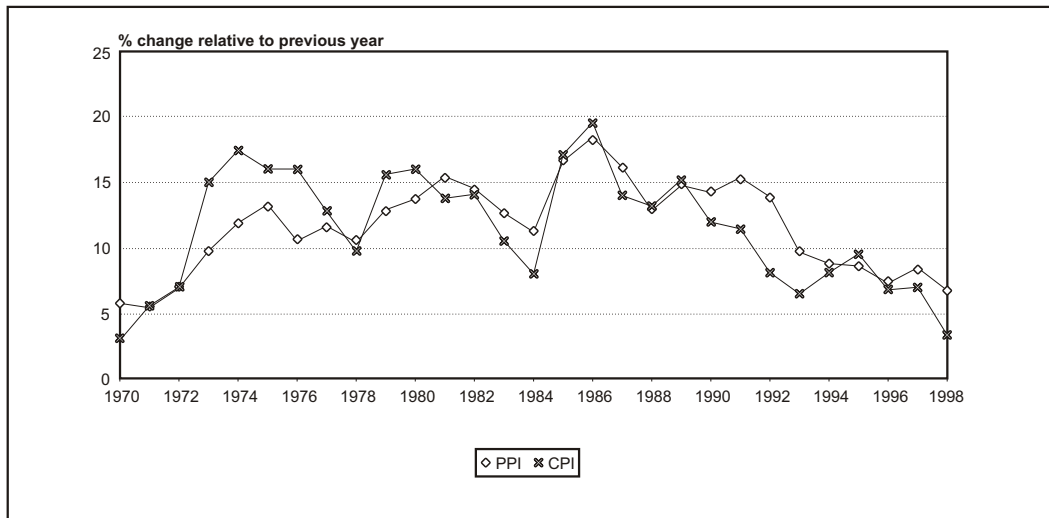
² Average annual index.

³ Based on the average annual index.

⁴ Average annual index.

Source: Stats SA

Percentage change in the average annual production price and consumer price indices compared to the previous year



19.2 Consumer price index by province (1995=100)

	Eastern Cape	Free State	Gauteng	KwaZulu-Natal	Mpumalanga	Northern Cape	Northern Province	North West	Western Cape	South Africa
Consumer price index (all items)										
1995	100,0	100,0	100,0	100,0	100,0	100,0	100,0	100,0	100,0	100,0
1996	107,6	106,7	107,3	107,9	107,1	106,8	108,0	106,8	107,7	107,4
1997 ¹	117,9	114,0	117,1	116,5	116,4	115,5	115,7	114,3	116,6	116,6
1998 ¹	126,4	121,1	125,4	124,0	125,7	122,5	123,1	122,2	123,7	124,6
Percentage change compared with the previous year (inflation rate)²										
1995	9,3%	8,2%	8,6%	8,5%	4,7%	8,7%	6,0%	8,7%	8,7%	8,7%
1996	7,6%	6,7%	7,3%	7,9%	7,1%	6,8%	8,0%	6,8%	7,7%	7,4%
1997 ¹	8,6%
1998 ¹	7,2%	6,2%	7,1%	6,4%	8,0%	6,1%	6,4%	6,9%	6,1%	6,9%

¹ As from 1997 the indices are based on information for the main metropolitan areas, as well as other urban areas; prior to 1997 the indices were based on information for metropolitan areas only.

² Based on the annual average weighted index.

.. Data not available.

Source: Stats SA

Purchasing power

20. Purchasing power of the rand (based on the consumer price index)

	1910	1930	1950	1970	1980	1985	1990	1991	1992	1993	1994	1995	1996	1997	1998	
The table indicates the value of the rand in any specific year compared with a rand (100c) in different base years	1910	100														
	1930	72	100													
	1950	47	65	100												
	1970	25	35	54	100											
	1980	9	13	19	36	100										
	1985	5	7	10	19	52	100									
	1990	2	3	5	9	25	49	100								
	1991	2	3	4	7	22	42	86	100							
	1992	2	2	4	7	19	37	76	88	100						
	1993	2	2	3	6	18	34	69	80	91	100					
	1994	1	2	3	6	16	31	64	74	83	92	100				
	1995	1	2	3	5	15	29	59	68	77	84	92	100			
	1996	1	2	3	5	14	27	55	63	72	79	86	93	100		
	1997	1	2	3	5	13	25	50	58	66	72	79	86	92	100	
	1998	1	2	2	4	12	23	47	54	62 ¹	68	74 ¹	80	86	94	100

¹ For example, between 1992 and 1998 the value of the rand dropped from 100c to 62c, and between 1994 and 1998 the value of the rand dropped from 100c to 74c.

Source: Stats SA

Price increases

21. Relative price increases (based on the consumer price index)

	1910	1930	1950	1970	1980	1985	1990	1991	1992	1993	1994	1995	1996	1997	1998
The table indicates the average level of consumer prices in any specific year compared with a rand (100c) in different base years	1910	1930	1950	1970	1980	1985	1990	1991	1992	1993	1994	1995	1996	1997	1998
	1,00														
	1,38	1,00													
	2,13	1,54	1,00												
	4,00	2,86	1,85	1,00											
	11,11	7,69	5,26	2,78	1,00										
	20,00	14,29	10,00	5,26	1,92	1,00									
	43,40	30,21	20,42	10,83	3,92	2,04	1,00								
	50,04	34,83	23,54	12,49	4,52	2,35	1,15	1,00 ¹							
	56,99	39,66	26,81	14,22	5,15	2,67	1,31	1,14	1,00						
	62,65	45,03	28,82	15,66	5,65	2,93	1,44	1,25	1,10	1,00 ¹					
	68,26	49,06	31,40	17,07	6,16	3,20	1,57	1,36	1,20	1,09	1,00				
	74,17	53,31	34,12	18,54	6,69	3,47	1,71	1,48	1,30	1,18	1,09	1,00			
	79,65	57,25	36,64	19,89	7,21	3,73	1,83	1,59	1,39	1,27	1,17	1,07	1,00		
	86,49	62,16	39,78	21,59	7,83	4,05	1,99	1,72	1,51	1,38	1,27	1,17	1,09	1,00	
	92,43	66,43	42,52	23,07	8,36	4,33	2,13	1,84 ¹	1,62	1,47 ¹	1,35	1,25	1,16	1,07	1,00

¹ For example, food and services that would have cost R1,00 in 1991, cost R1,84 in 1998, and foods and services that would have cost R1,00 in 1993, cost R1,47 in 1998.

Source: Stats SA

Exchange rates

22. Price in SA cents of one foreign currency unit¹

	1994	1995	1996	1997	1998
Average for					
Australia (Dollar)	259,00	268,87	336,88	342,40	347,06
Botswana (Pula)	132,36	130,95	129,60	126,51	130,98
France (Franc)	64,11	72,75	83,95	79,02	94,07
Germany (Mark)	219,30	253,35	285,36	266,02	315,34
Japan (Yen)	3,48	3,88	3,95	3,81	4,24
Netherlands (Guilder)	195,55	226,18	254,68	236,36	279,63
United Kingdom (Pound)	543,74	572,43	671,96	754,85	916,33
USA (Dollar)	354,97	362,70	429,64	460,73	553,16
Zimbabwe (Dollar)	43,42	41,85	42,89	38,43	25,44

¹ Weighted average in the banks' daily rates at approximately 10:30. Weights are based on the banks' foreign exchange transactions.

Source: South African Reserve Bank

Provincial offices

EASTERN CAPE

BISHO
P O BOX 93
BISHO 5605
Tel: (040) 635-0432
Fax: (040) 635-0449

KWAZULU-NATAL

DURBAN
PRIVATE BAG X54337
DURBAN 4000
Tel: (031) 332-0436
Fax: (031) 337-5846

NORTHERN PROVINCE

PIETERSBURG
PRIVATE BAG X9441
PIETERSBURG 0700
Tel: (015) 295-3300
Fax: (015) 295-3579

FREE STATE

BLOEMFONTEIN
PRIVATE BAG X20541
BLOEMFONTEIN 9300
Tel: (051) 447-7766
Fax: (051) 447-8402

MPUMALANGA

NELSPRUIT
PRIVATE BAG X11290
NELSPRUIT 1200
Tel: (013) 754-0600
Fax: (013) 755-2898

NORTH WEST

MMABATHO
P O BOX 23213
MAFIKENG 2745
Tel: (018) 384-2877
Fax: (018) 384-2832

GAUTENG

JOHANNESBURG
P O BOX 7798
JOHANNESBURG 2000
Tel: (011) 331-0122
Fax: (011) 331-0260

NORTHERN CAPE

KIMBERLEY
PRIVATE BAG X5053
KIMBERLEY 8300
Tel: (053) 833-3965
Fax: (053) 832-5407

WESTERN CAPE

CAPE TOWN
PRIVATE BAG X9072
CAPE TOWN 8000
Tel: (021) 423-1040
Fax: (021) 422-1741

Head office

For more information contact:

Users Enquiries: Tel: (012) 310-8600
Fax: (012) 310-8500
Main switchboard: Tel: (012) 310-8911
Fax: (012) 322-3374
E-mail: info@statssa.pwv.gov.za

Private Bag X44
PRETORIA
0001

Steyn's Arcade
274 Schoeman Street
Pretoria 0002

Website: www.statssa.gov.za